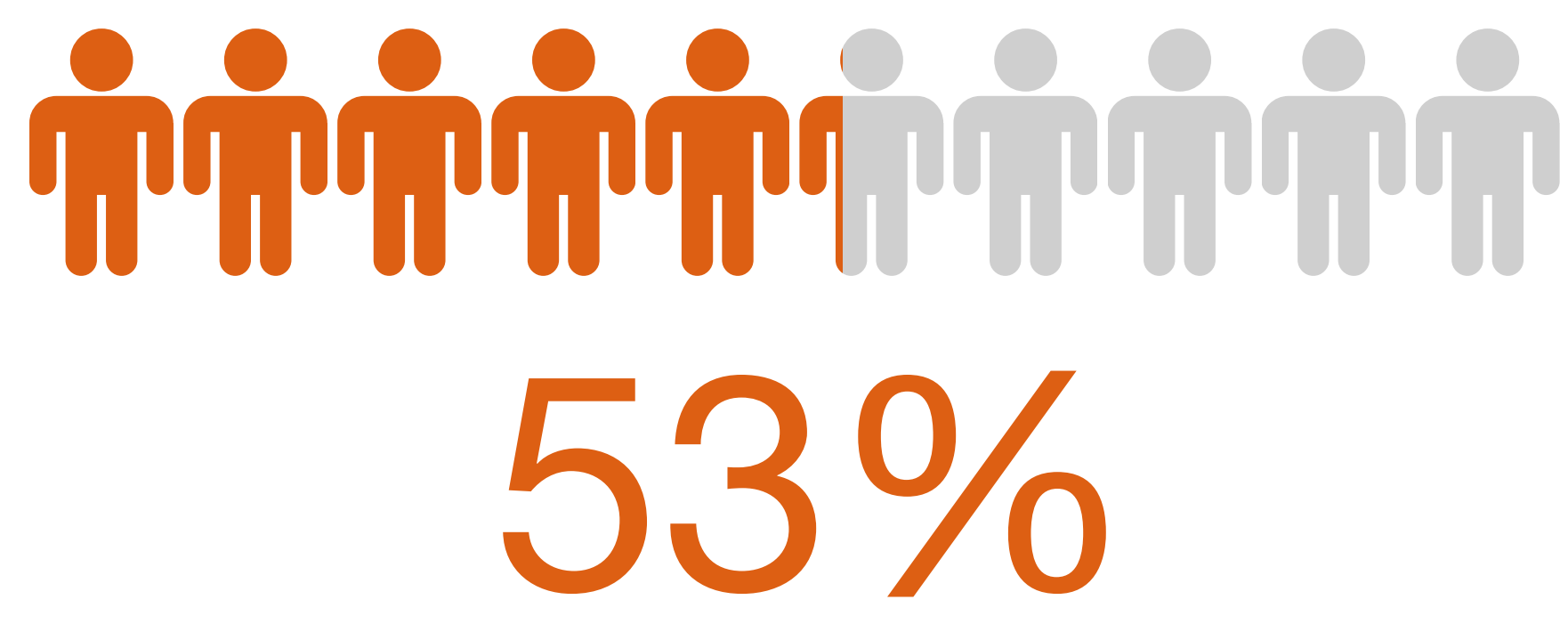


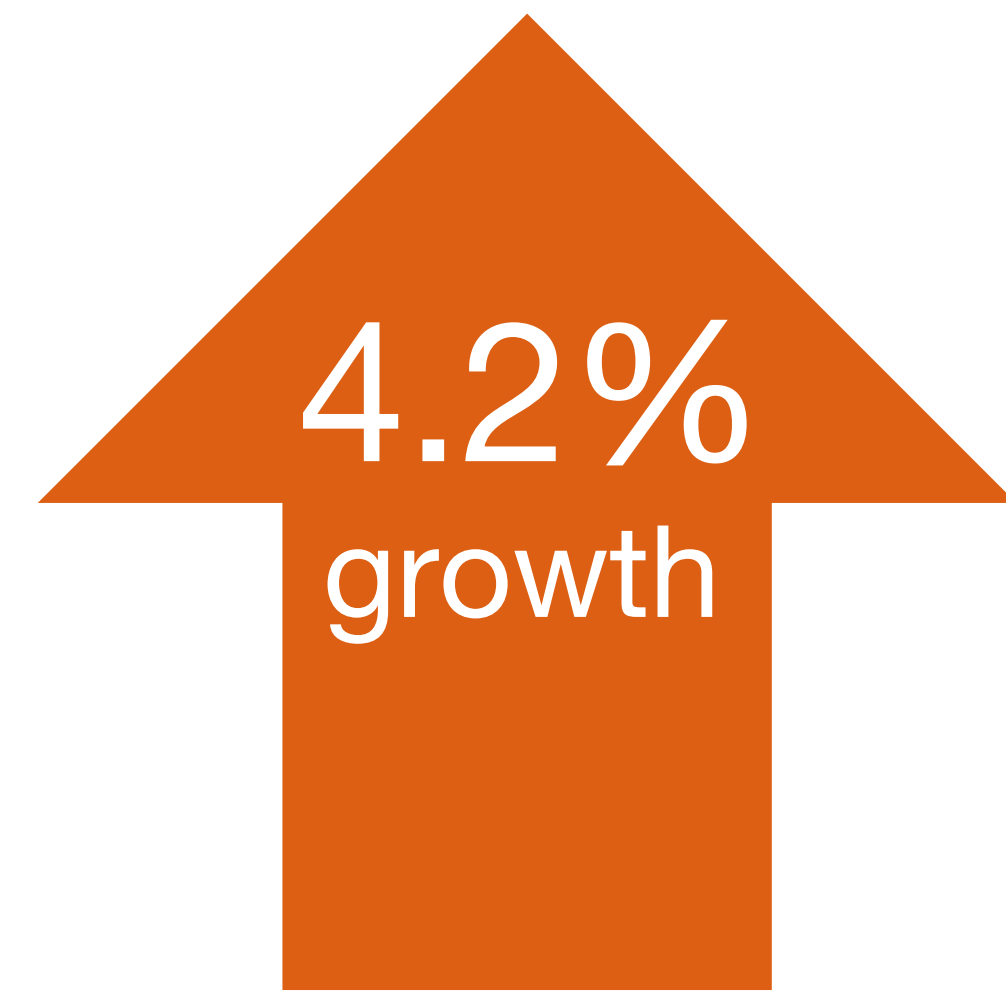
Tennessee Snapshot 2020

DEMOGRAPHICS

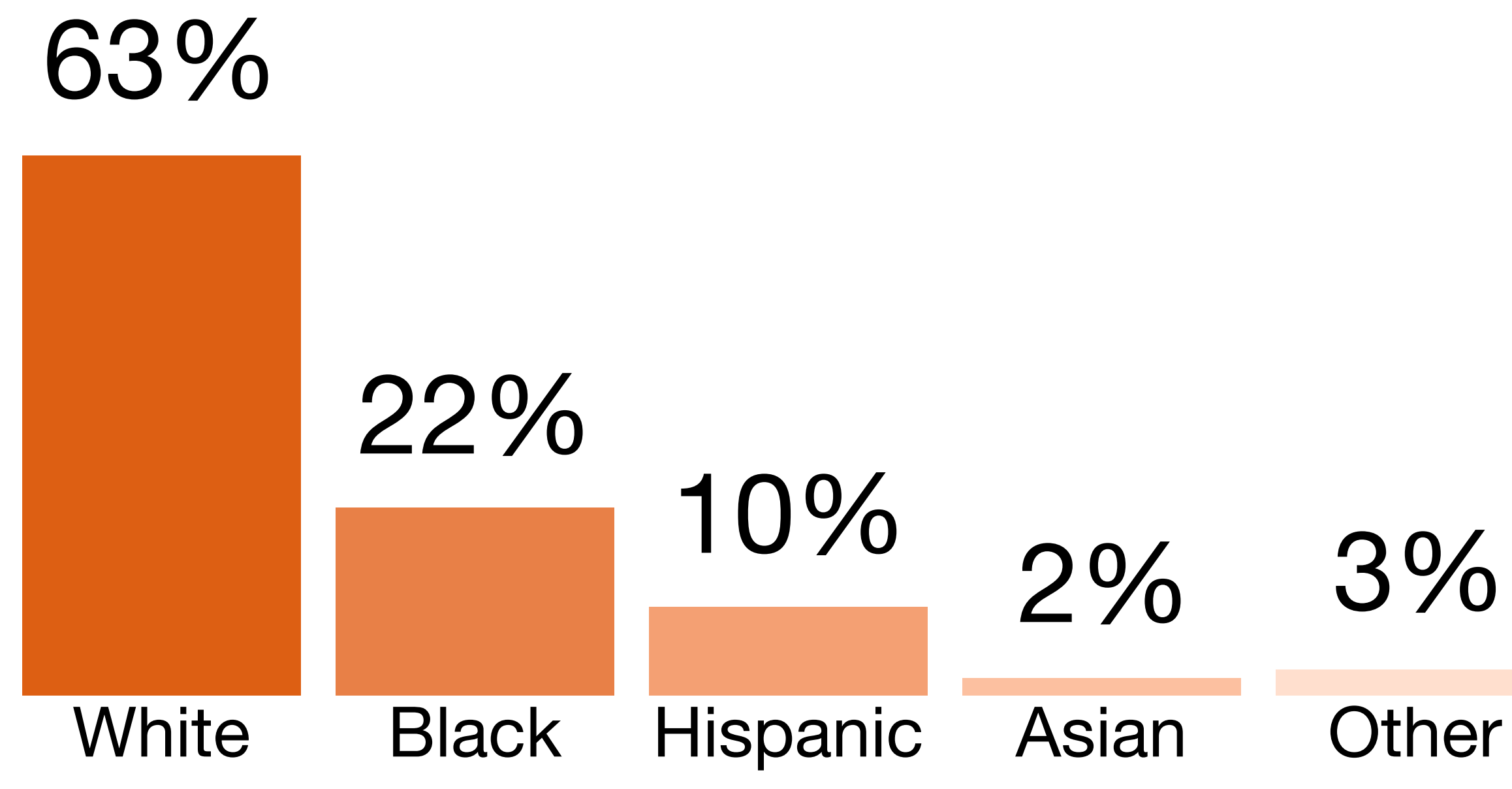
dependent-age population by 2030



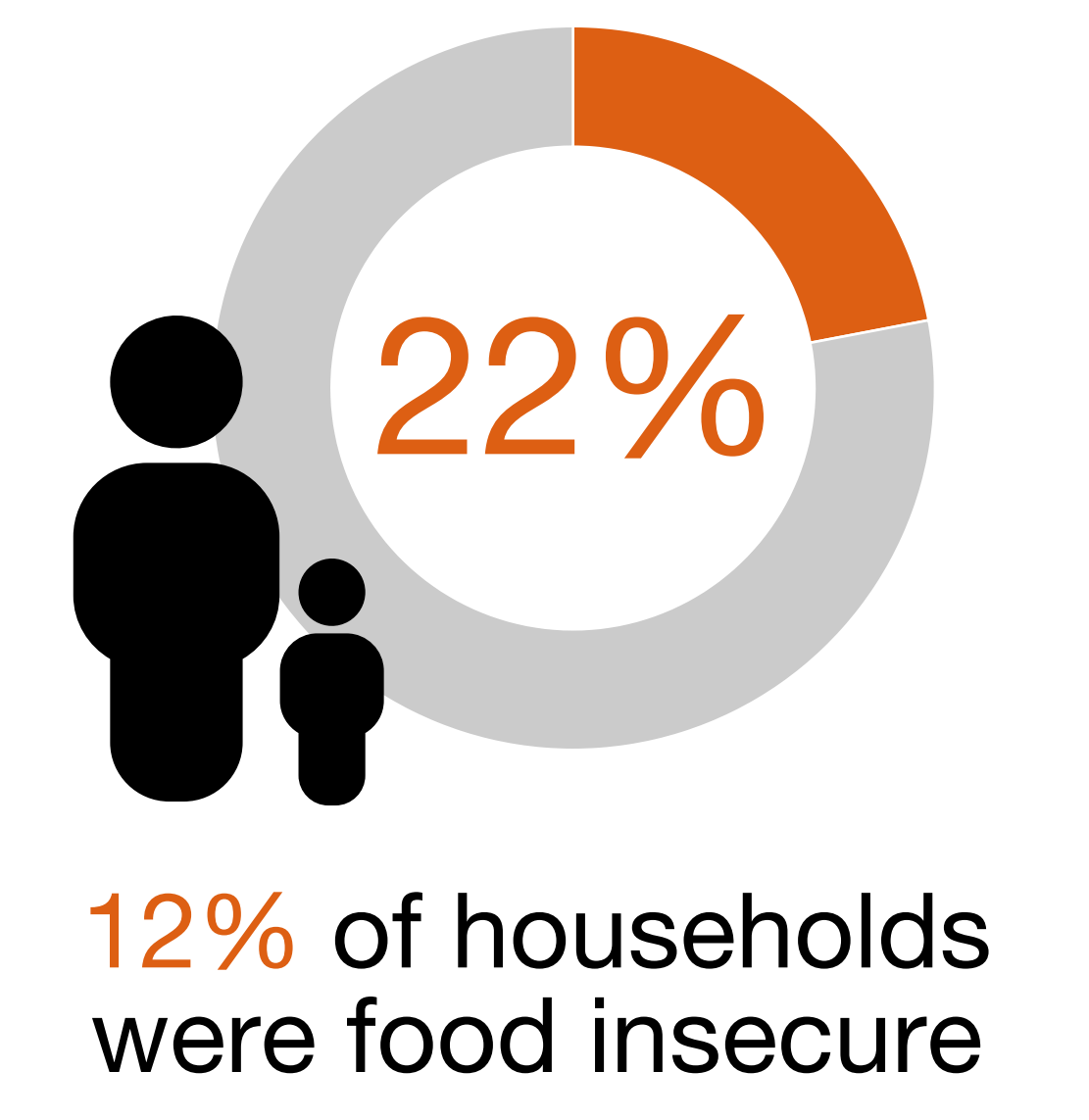
PK-12 enrollment 2012 to 2017



PK-12 enrollment

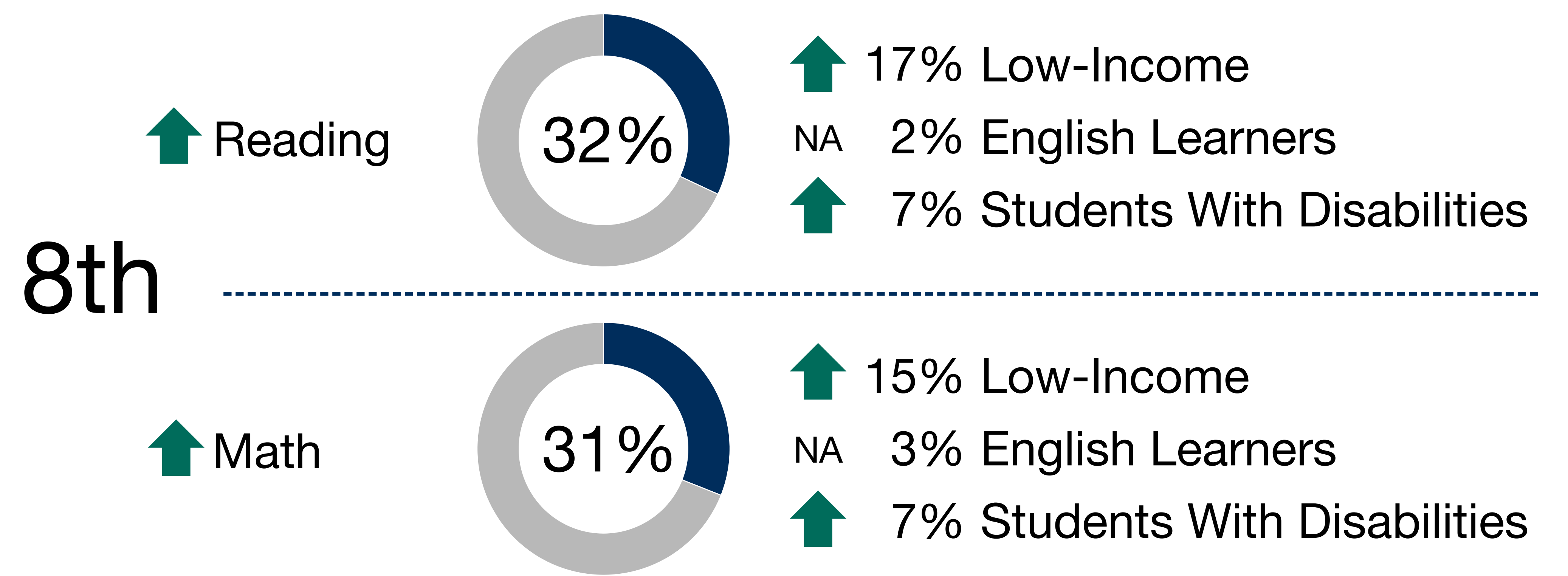
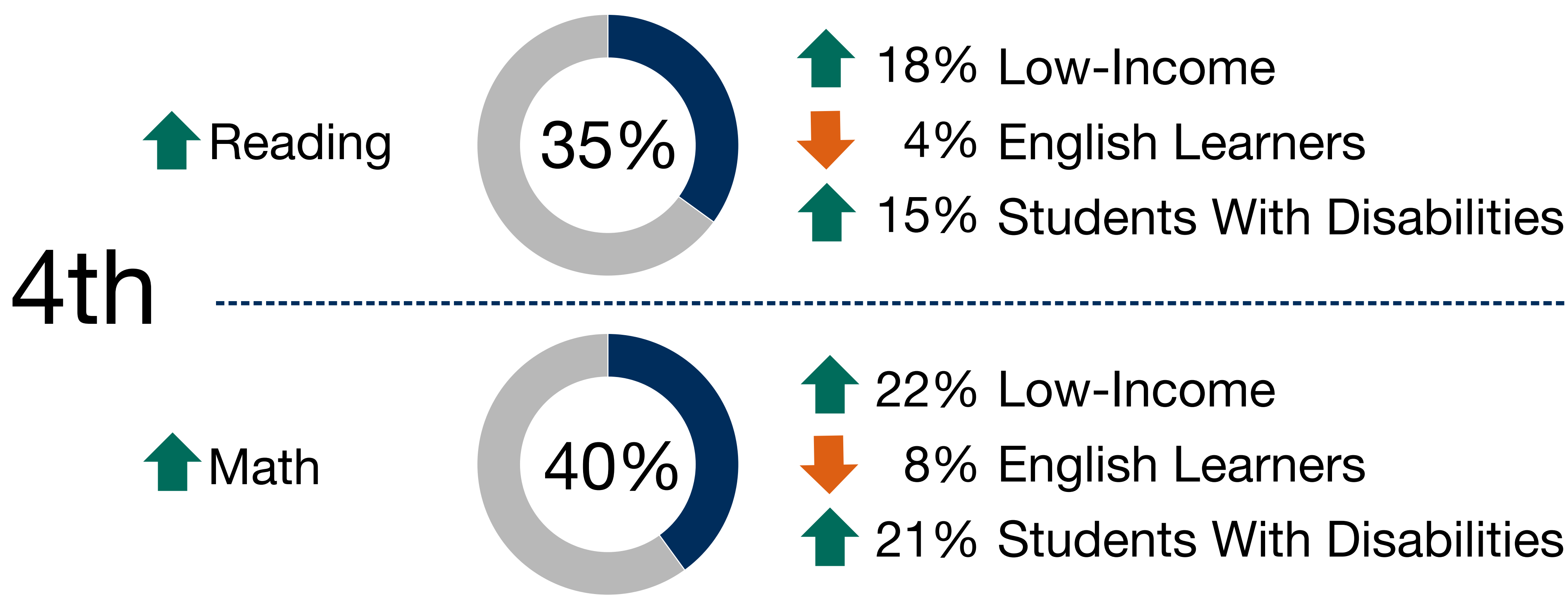


children under 18 living in poverty



EARLY AND MIDDLE GRADES

Percentages of students performing at or above Proficient on NAEP in 2019

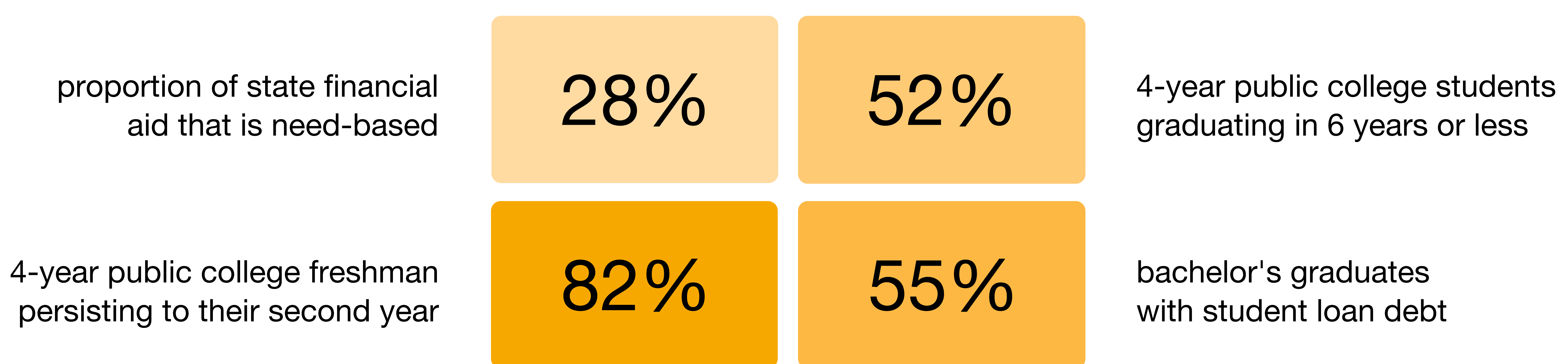


Arrows indicate direction of change of 0.1 points or more from 2009 to 2019.

HIGH SCHOOL



POSTSECONDARY



WORKFORCE

