

SREB

Better Supports, Better Success:

How Can Schools Provide More
Effective Student Supports to Increase
Achievement?

Scott Warren

Director Making Schools Work

Turn to a Neighbor

How would you define social emotional learning or social emotional development?

What is Social Emotional Development?

Domains	Attributes
Self-Awareness	<ul style="list-style-type: none">• Identifying emotions• Accurate self-perception• Self-efficacy
Social Awareness	<ul style="list-style-type: none">• Perspective Taking• Empathy• Respect for Others
Responsible Decision Making	<ul style="list-style-type: none">• Identifying Problems• Solving Problems• Evaluating• Reflecting
Self-Management	<ul style="list-style-type: none">• Impulse control• Self-Discipline• Goal Setting
Relationship Skills	<ul style="list-style-type: none">• Communication• Social Engagement• Teamwork

Why Should States Focus on Social Emotional Development?

- Nearly 700,000 children are abused in the U.S. annually.
- 1 in 4 children were the victim of robbery, vandalism, or theft during the previous year
- [National Survey of Children's Health](#) reports that nearly 50 percent of the children in the United States have experienced “at least one or more types of serious childhood trauma.”
- Over **90%** of parents think schools should have a role in development of what they typically call life skills.

Why Focus on Social Emotional Development

- EdWeek Research Center asked teachers about social and emotional learning: **78%** agreed its part of their job to help students develop strong social and emotional skills. But **43%** also said they had difficulty “finding ways to help students who appear to be struggling with problems outside of school.” **23%** said what was most challenging was “finding ways to help students who appear to be experiencing emotional or psychological distress.”
- Eight in 10 employers say social and emotional skills are the most important yet are also the hardest to find.

Does it Make a Difference?

- A 2015 cost-benefit study found that every dollar invested across six SED interventions yields an \$11 return in earnings, health, reduced crime, and other long-term benefits.
- A 2011 meta-analysis of 213 school-based, universal SED programs involving 270,034 students in kindergarten through high school found an **11%** gain in academic achievement
- Schools that focus on Social Emotional Development show misbehavior incidents drop **28%**, suspensions drop **44%**, and positive student behaviors rise **63%**.

The Challenge

- A 2013 survey commissioned by the Collaborative for Academic, Social, and Emotional Learning (CASEL), **87%** of teachers believe a larger focus on SED would improve workforce readiness and **78%** believe it would improve college preparation.
- Only **44%** of teachers surveyed reported that SED is a focus schoolwide.

What are States Doing?



What about your state?

Two – minute Pause: Turn to an elbow partner and share what your state may have in place for SED.

Websites to Track Your State

- Two websites provide information:
 - <https://www.childtrends.org/state-laws-promoting-social-emotional-and-academic-development-leave-room-for-improvement>
 - <https://casel.org/state-scan-scorecard-project-2/>

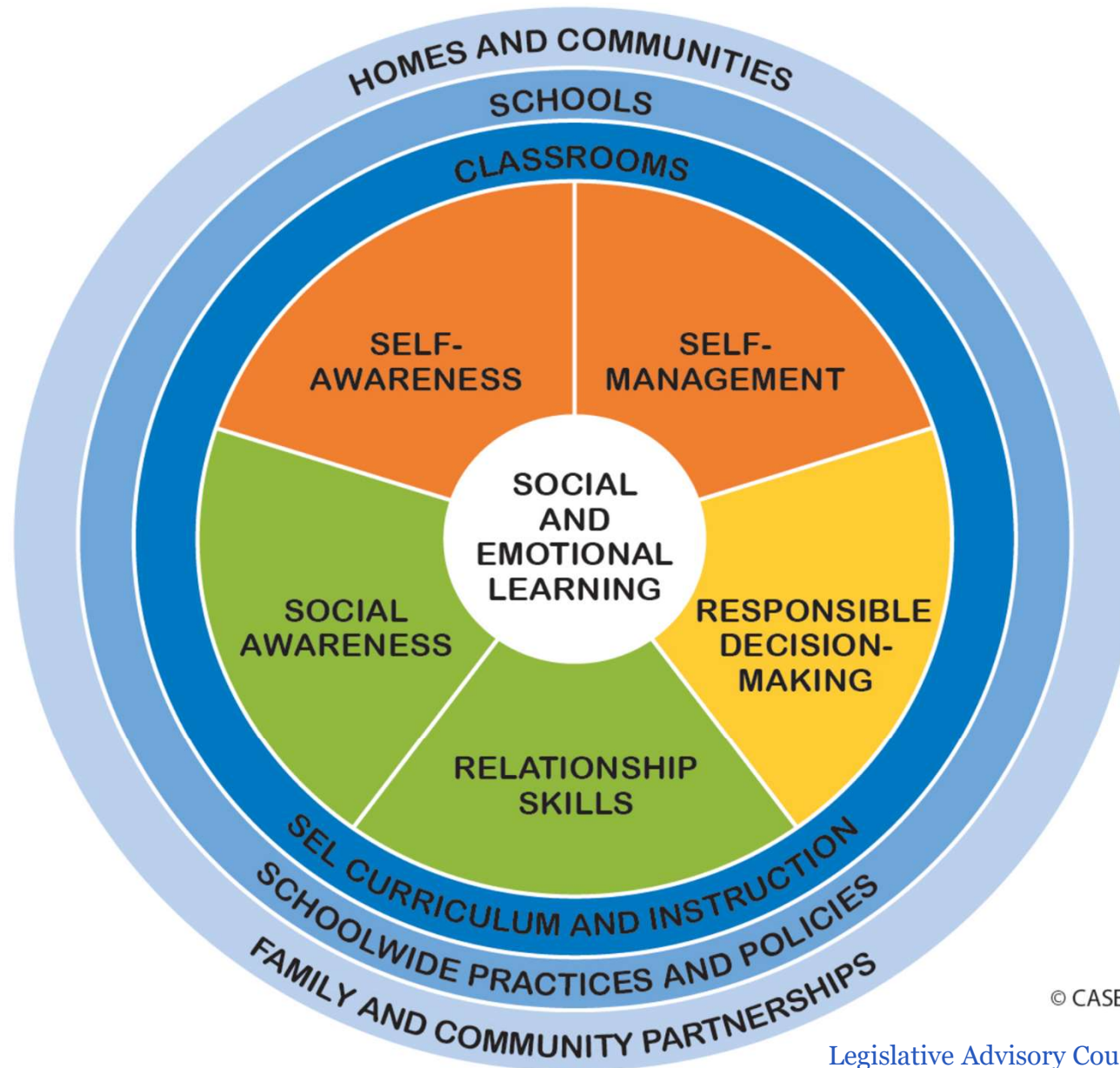
A Nation At Hope

- National Commission on Social, Emotional and Academic Development
- Read the one-page set of recommendation
- Find one point in the article that you would like to discuss. It may be something you agree/disagree with or want to just learn more about.
- Underline it.

Save the Last Word

- Person with the next birthday goes first
- Share your one key point and point it out in the article for others
- Going clockwise, each gets to comment on the shared key point
- When you get back to the person who shared, they can share their thoughts as the last word.
- Move clockwise for the next person to share their key point and repeat the process

What Do SED Efforts Look Like in Schools?



© CASEL 2017

Specific Examples

- Collecting culture data
- Making better use of community support services
- Schoolwide policies and practices – Use of Counselors in new ways
- Direct Instruction/Use of Curriculum Products (prominent at elementary level)
- Infusion into specific practices (e.g. PBL)
- Wraparound supports
- Use of technology - Teletherapy

Resources

1. Indianapolis School Deals with Trauma
2. AJC Article
3. This Time, With Feeling Summary
4. CASEL Articles
5. <https://www.aspeninstitute.org/programs/national-commission-on-social-emotional-and-academic-development/>

American Institute for Research (AIR) Guidelines for State SEL Efforts

1. Clearly stated, freestanding learning goals with age-appropriate benchmarks to articulate goals for student SEL, preschool through high school.
2. Policies are integrated and aligned with academic content standards.
3. Incorporate guidelines about teacher practices that support social and emotional development.
4. Include guidelines on how to create positive learning environment.
5. Are culturally and linguistically appropriate.
6. Link to strategies and tools to enhance implementation.

Now What?

- Find out what is in place?
- Determine your resources?
- Who are potential partners to help?
- What actions can your state consider?
- How can SREB support your efforts?

Questions



[This Photo](#) by Unknown Author is licensed under [CC BY](#)