

SREB Data Update

Rachel Christeson, PhD
Director, Research & Data Analysis
NC-SARA

October 17, 2024

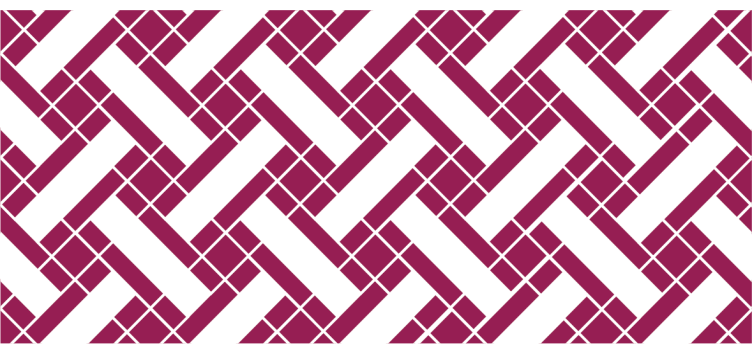


SREB Data Update



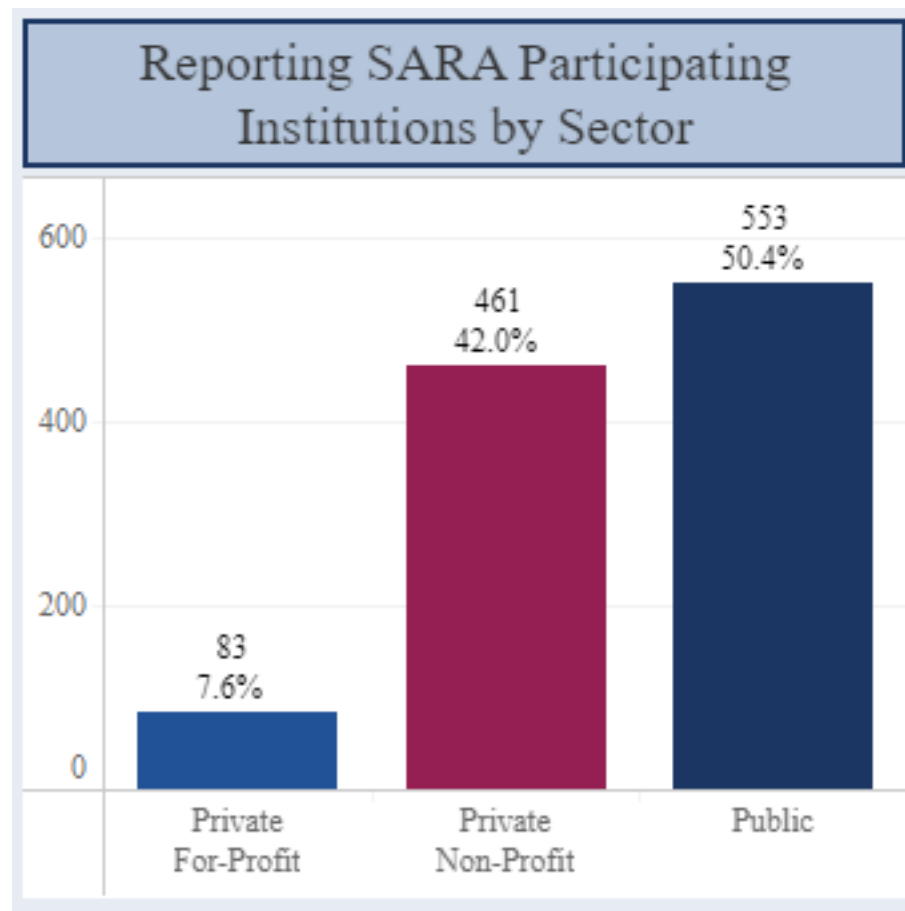
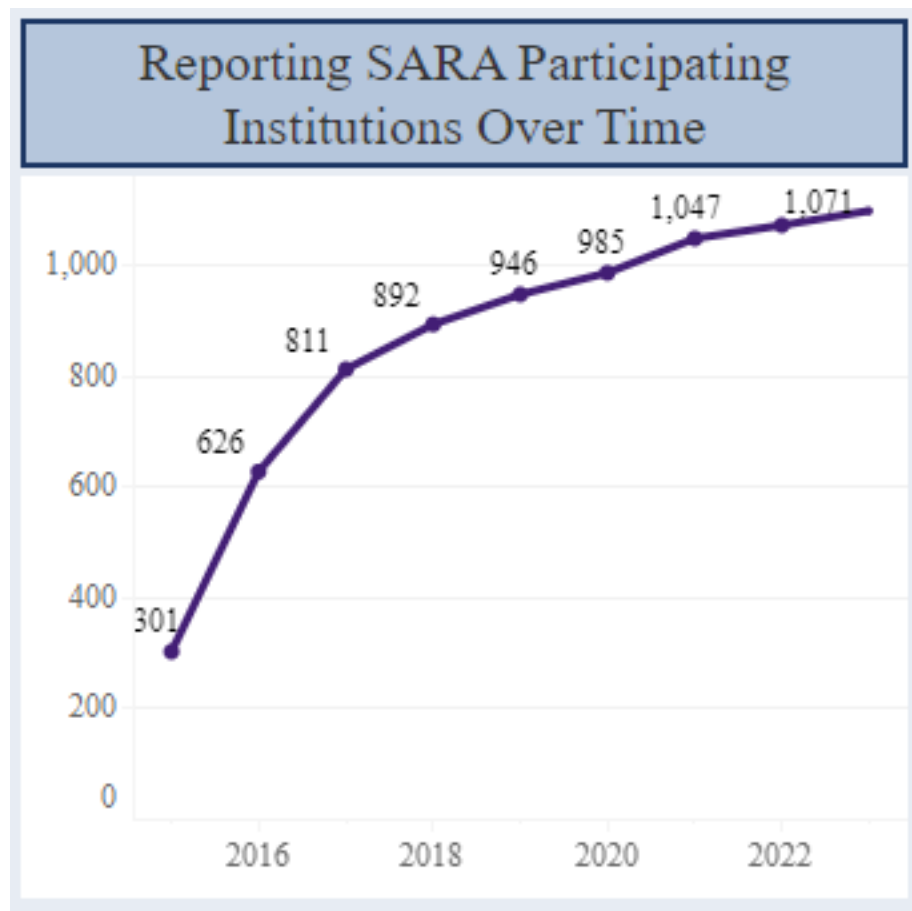
Agenda:

- 2023 Data Reporting
- Changes for 2025 Data Reporting
- Other Data Reports of Interest
- Questions & Answers



2023 Data Reporting

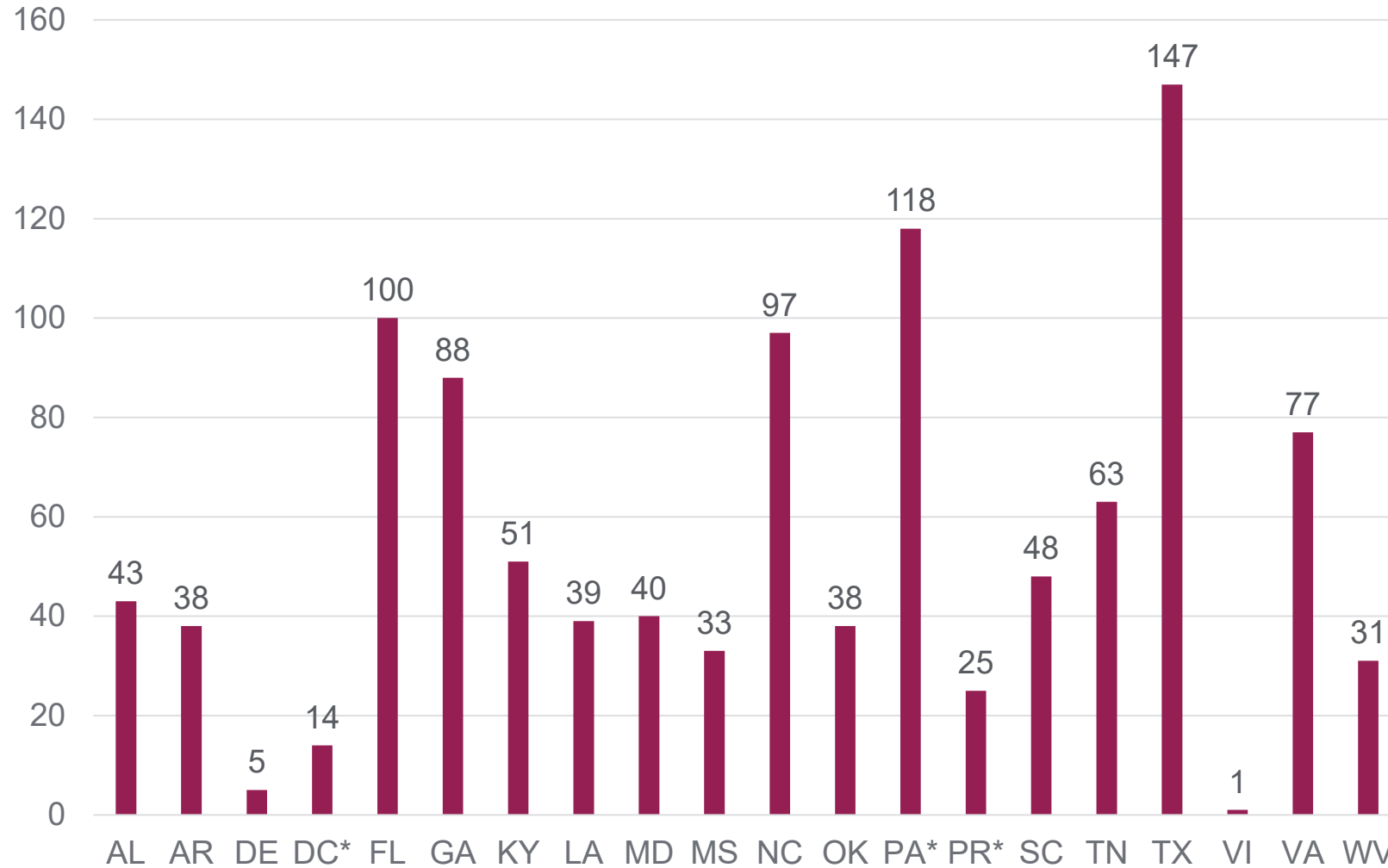
SREB Reporting Institutions & Sector Analysis for 2023



Explore the interactive data dashboards:
<https://nc-sara.org/data-dashboards>

Private For-Profit	7.6%
Private Non-Profit	42.0%
Public	50.4%

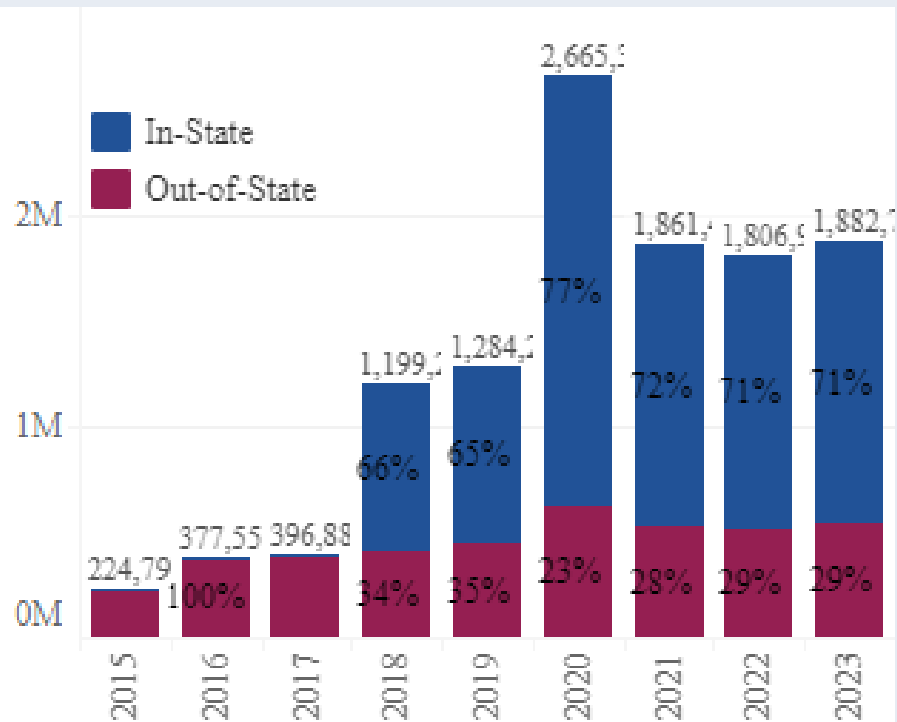
Number of Institutions in SREB States for 2023



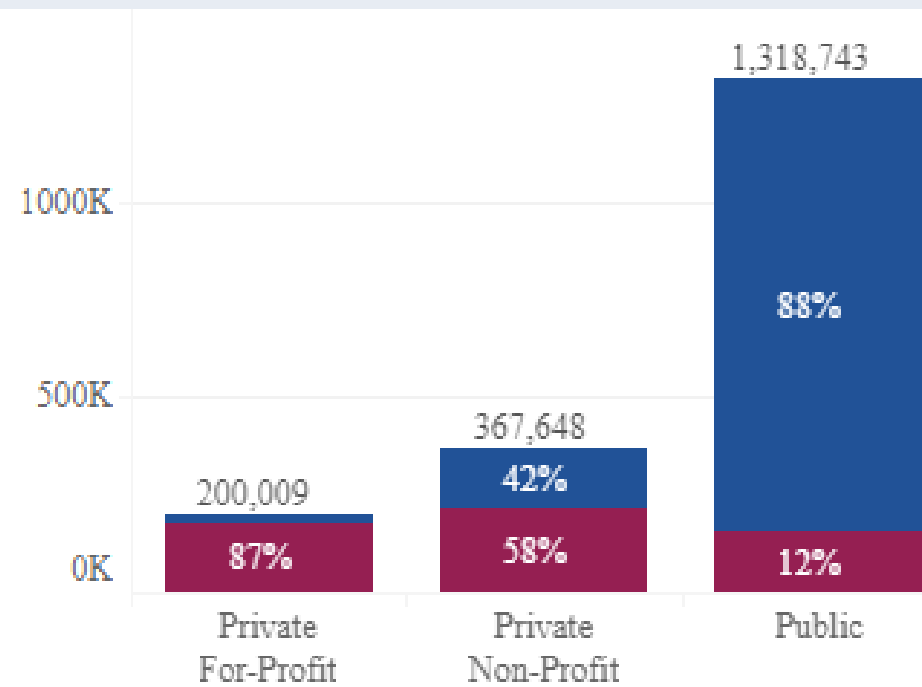
* SARA Affiliate, not full member

SREB Total EDEE & Sector Trends for 2023

All Exclusively Distance Education Enrollment
(In-State vs. Out-of-State)

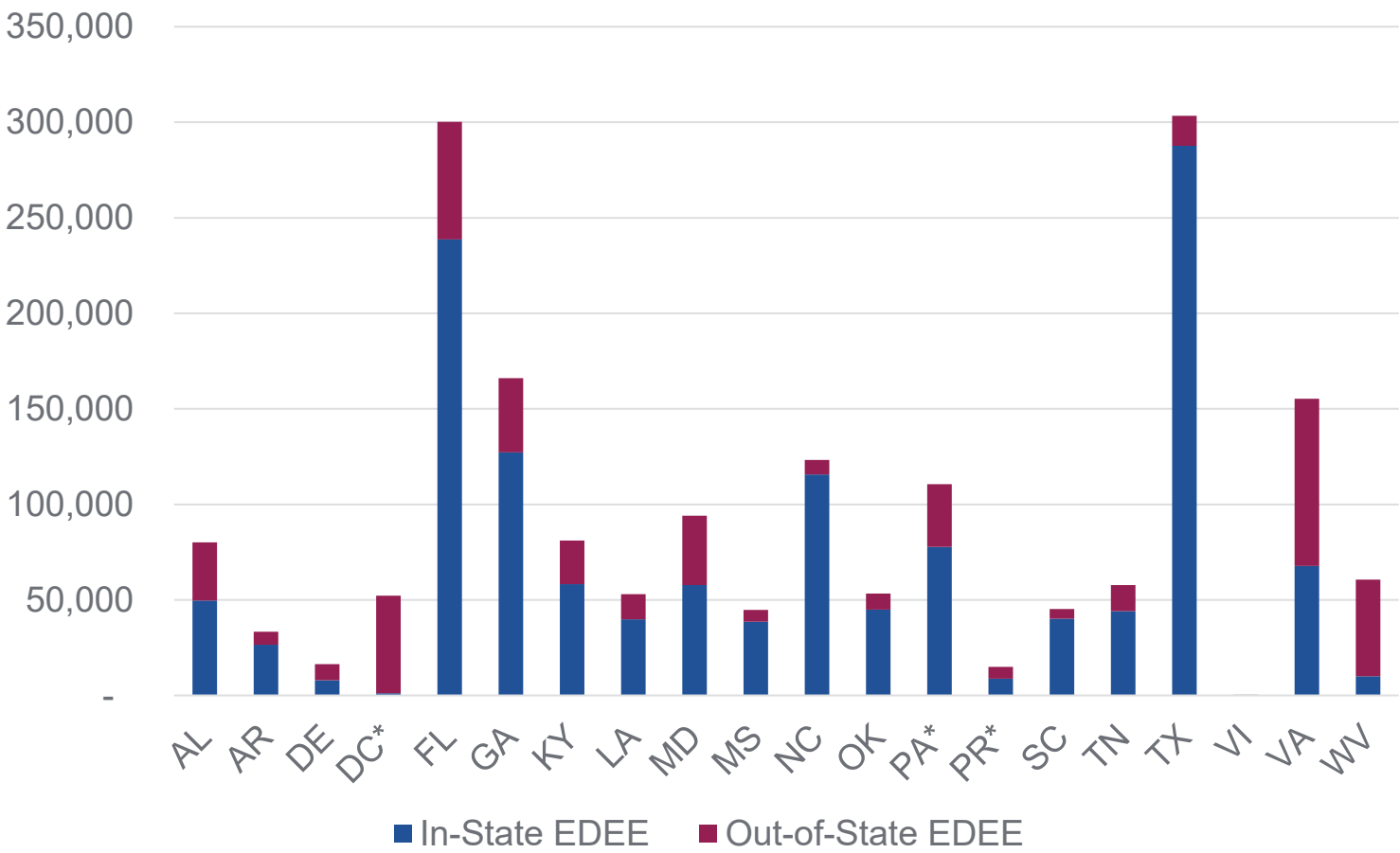


All Exclusively Distance Education Enrollment
by Sector (In-State vs. Out-of-State)



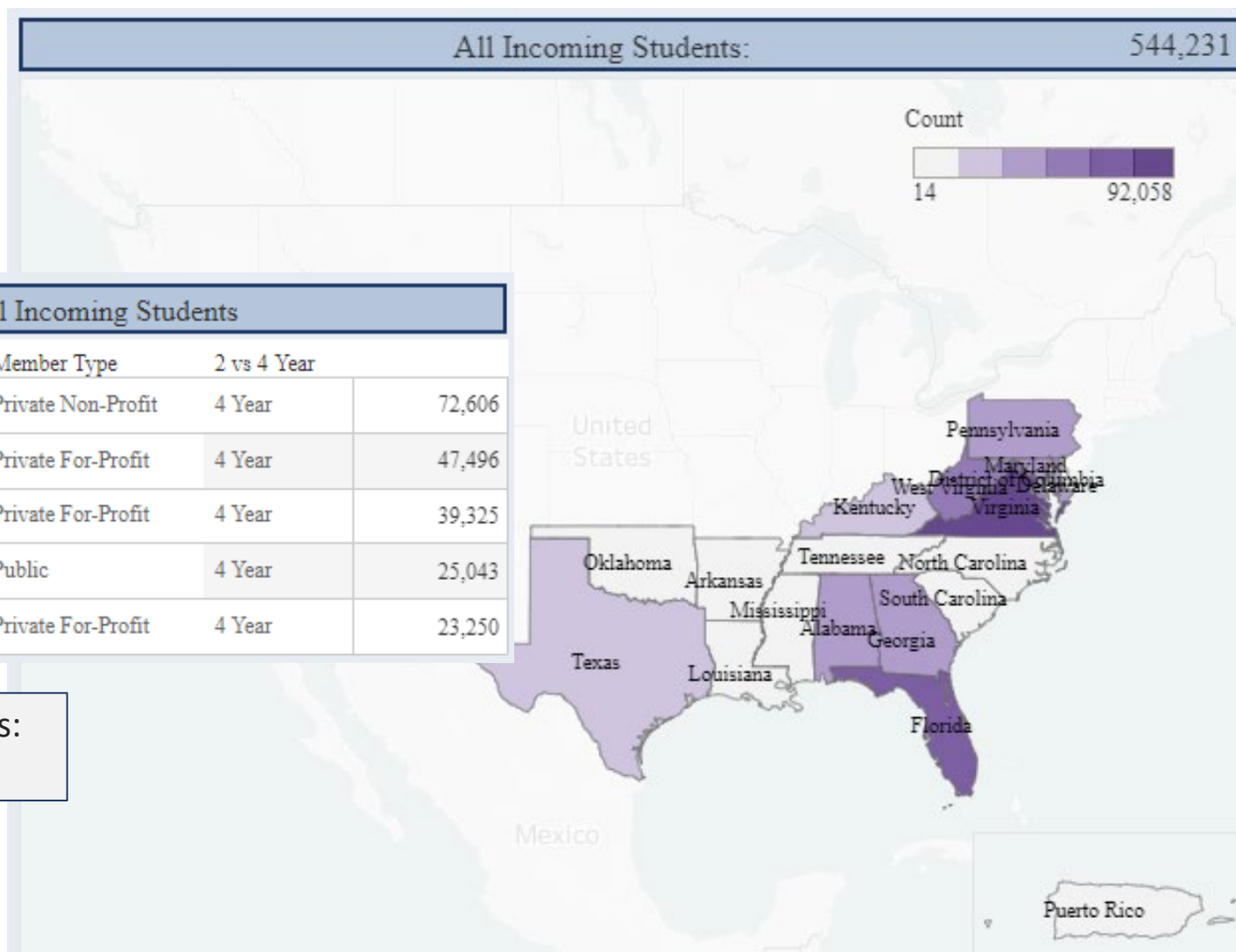
Explore the interactive data dashboards:
<https://nc-sara.org/data-dashboards>

In-State and Out-of-State EDEE in SREB States for 2023



* SARA Affiliate, not full compact member

SREB Incoming EDEE Map for 2023

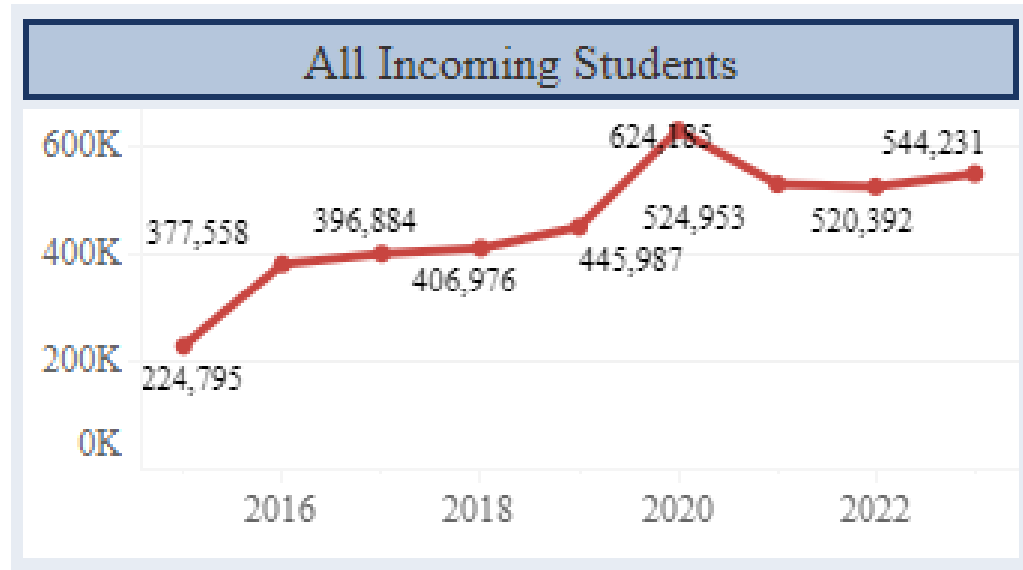


Top Institutions Attended by All Incoming Students

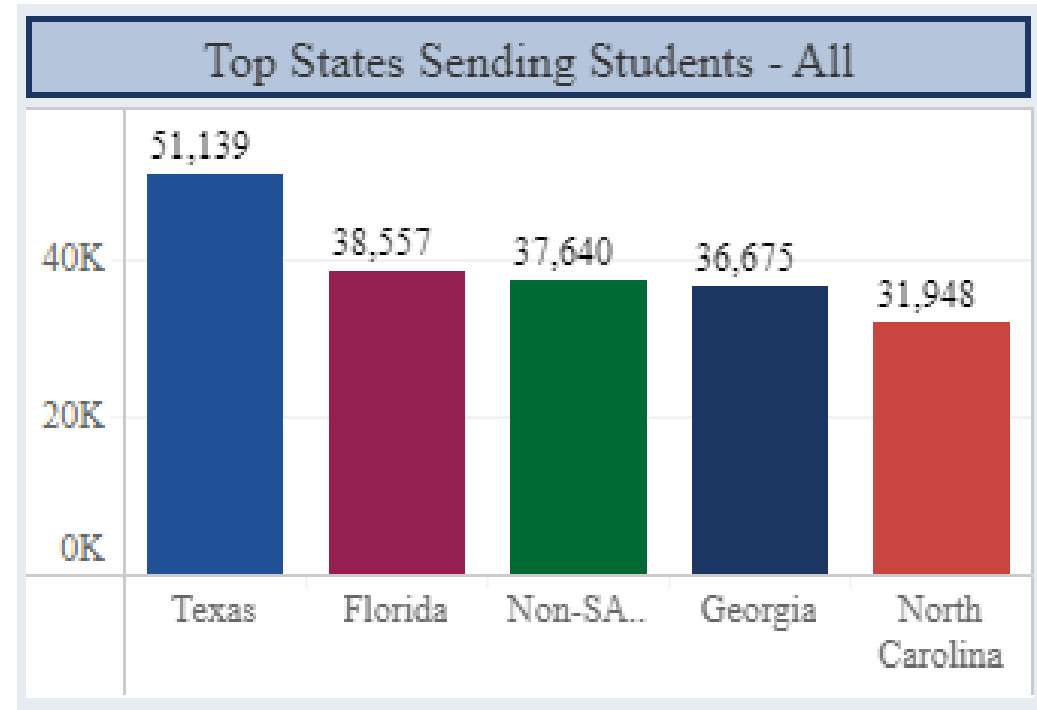
Institution	State SARA Grou..	Member Type	2 vs 4 Year	
Liberty University	Virginia	Private Non-Profit	4 Year	72,606
American Public University System	West Virginia	Private For-Profit	4 Year	47,496
Strayer University	District of Colum..	Private For-Profit	4 Year	39,325
University of Maryland Global Campus	Maryland	Public	4 Year	25,043
Full Sail University	Florida	Private For-Profit	4 Year	23,250

Explore the interactive data dashboards:
<https://nc-sara.org/data-dashboards>

SREB Incoming EDEE for 2023



Explore the interactive data dashboards:
<https://nc-sara.org/data-dashboards>



SREB Outgoing EDEE Map for 2023

All Outgoing Students:

872,691

Count

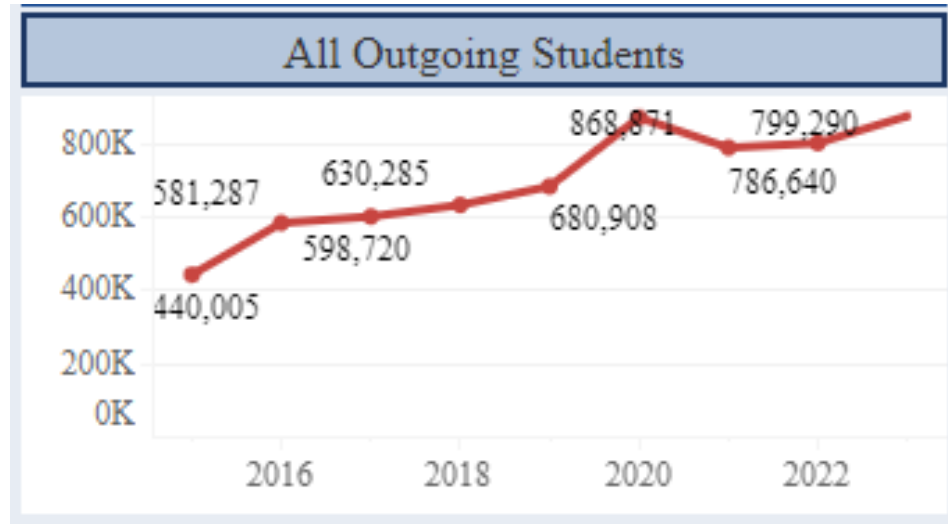


Top Institutions Attended by All Outgoing Students

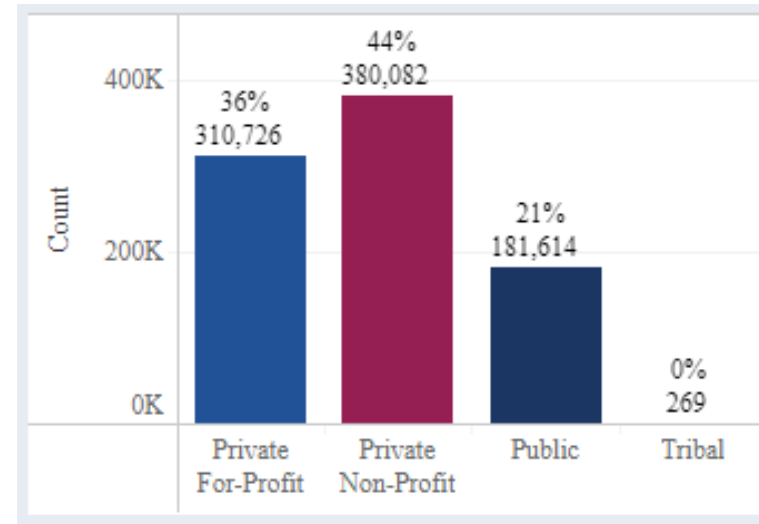
Institution	State SARA Gr.	Member Type	2 vs 4 Year	
Southern New Hampshire University	New Hampshire	Private Non-Profit	4 Year	79,464
Western Governors University	Utah	Private Non-Profit	4 Year	76,120
University of Phoenix	Arizona	Private For-Profit	4 Year	50,317
Liberty University	Virginia	Private Non-Profit	4 Year	46,667
Penn Foster College	Arizona	Private For-Profit	4 Year	38,211

Explore the interactive data dashboards:
<https://nc-sara.org/data-dashboards>

SREB Outgoing EDEE for 2023



Explore the interactive data dashboards:
<https://nc-sara.org/data-dashboards>



Private For-Profit 36%
Private Non-Profit 44%
Public 21%
Tribal 0%

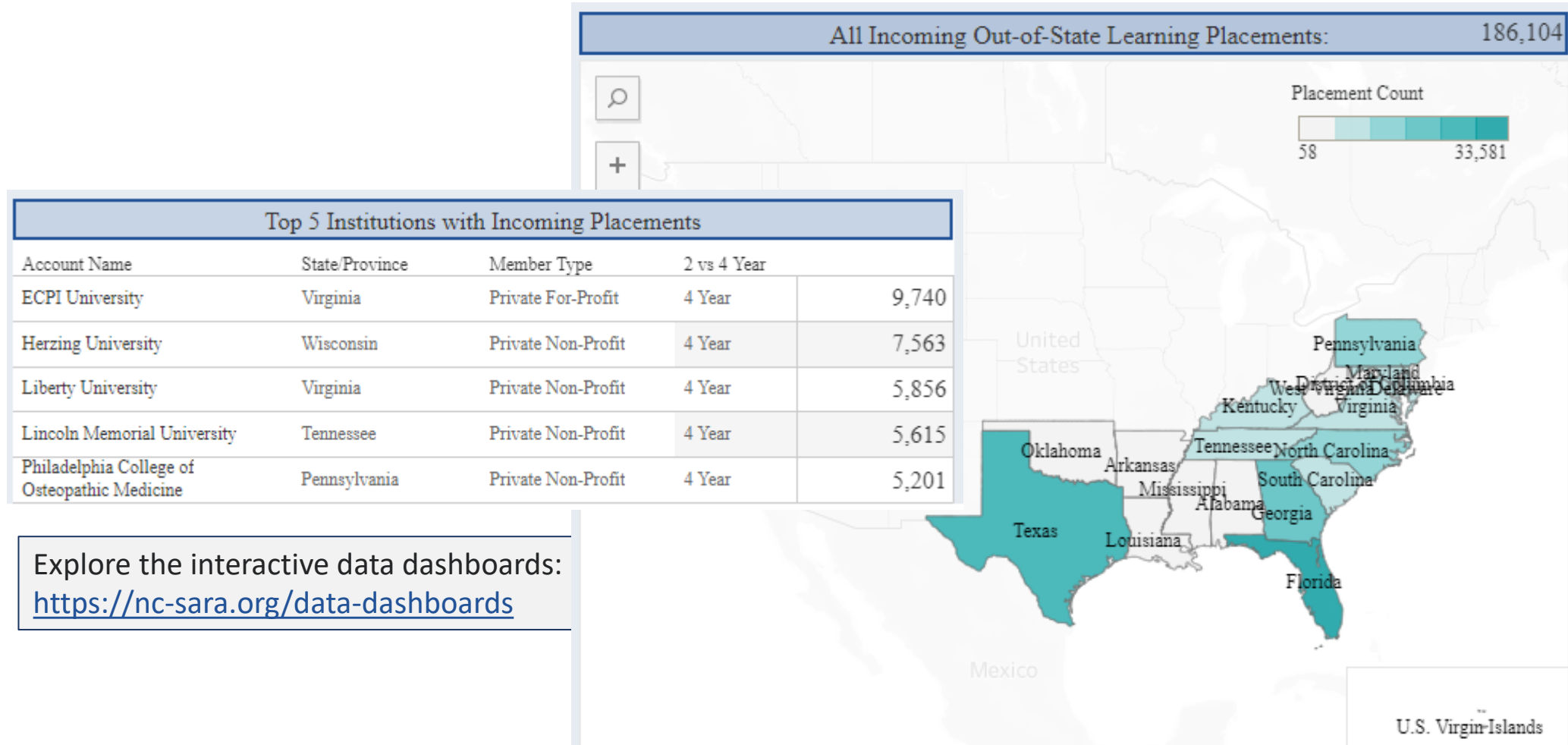
Out-of-State Learning Placements (OOSLP)

What are OOSLP?

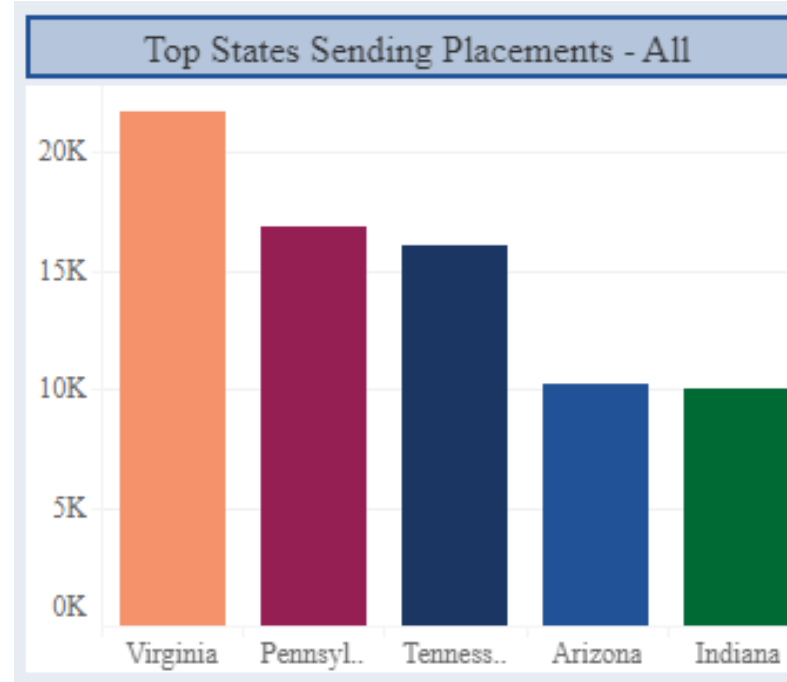
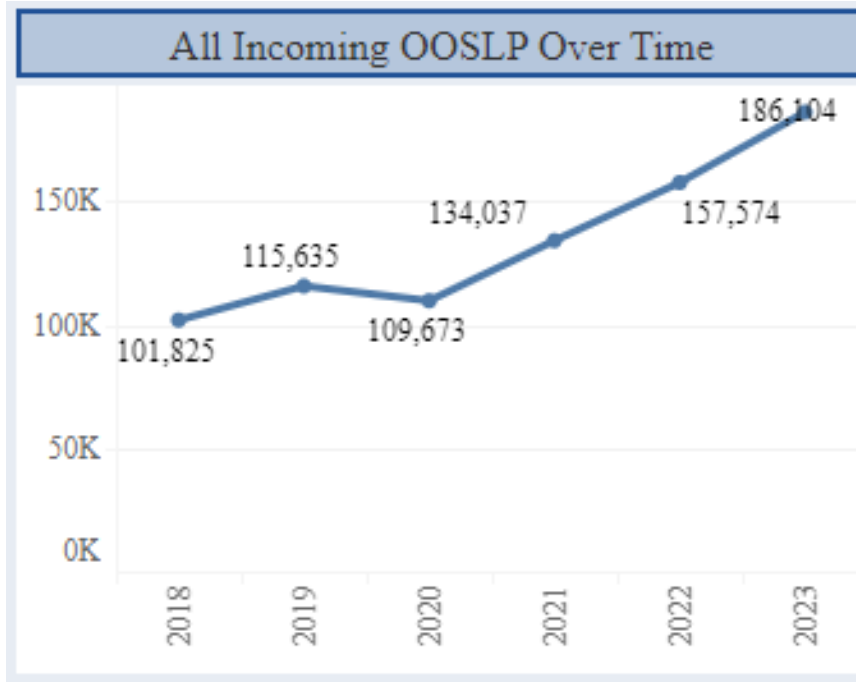
- Learning placements are on-ground, out-of-state experiential learning activities
- OOSLP include clinical rotations, student teaching, internships, and other similar activities
- OOSLP are often a required part of obtaining a degree and/or license to practice a particular profession
- Note that reporting **includes on-ground students** as well as distance education students



SREB Incoming Out-of-State Learning Placements Map



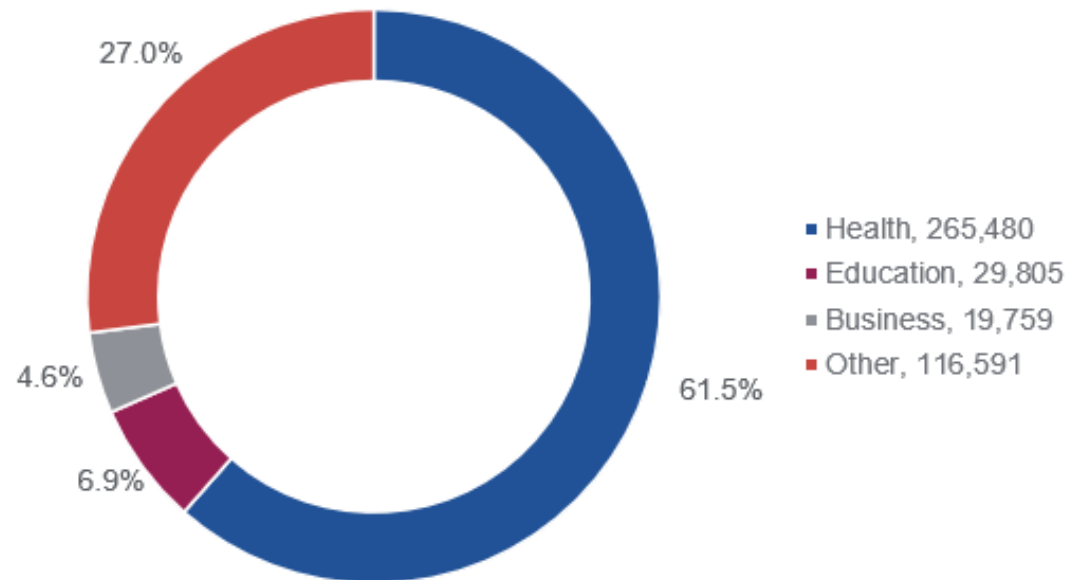
SREB Incoming Out-of-State Learning Placements



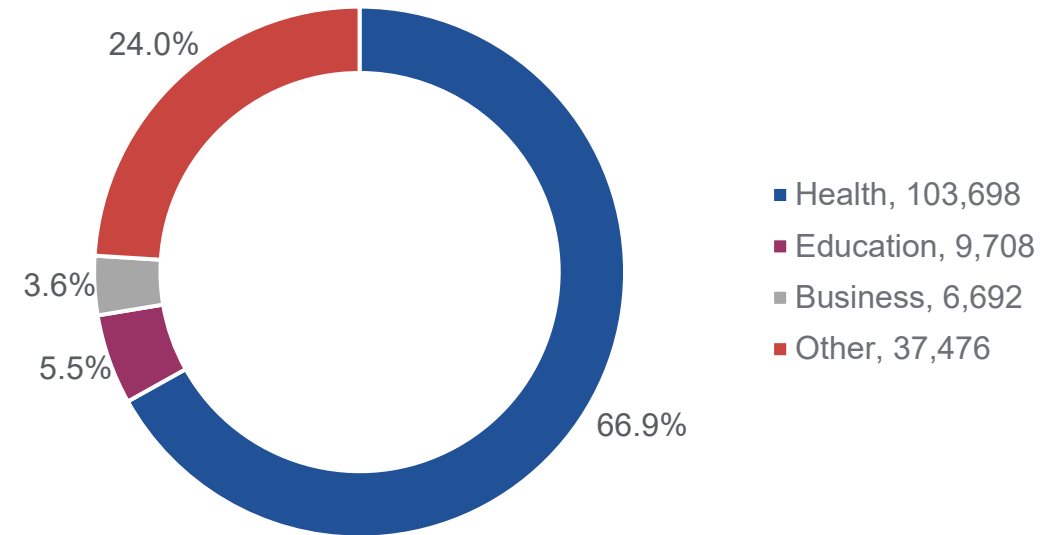
Explore the interactive data dashboards:
<https://nc-sara.org/data-dashboards>

Out-of-State Incoming Learning Placements Reported by CIP Code Program Areas for 2023

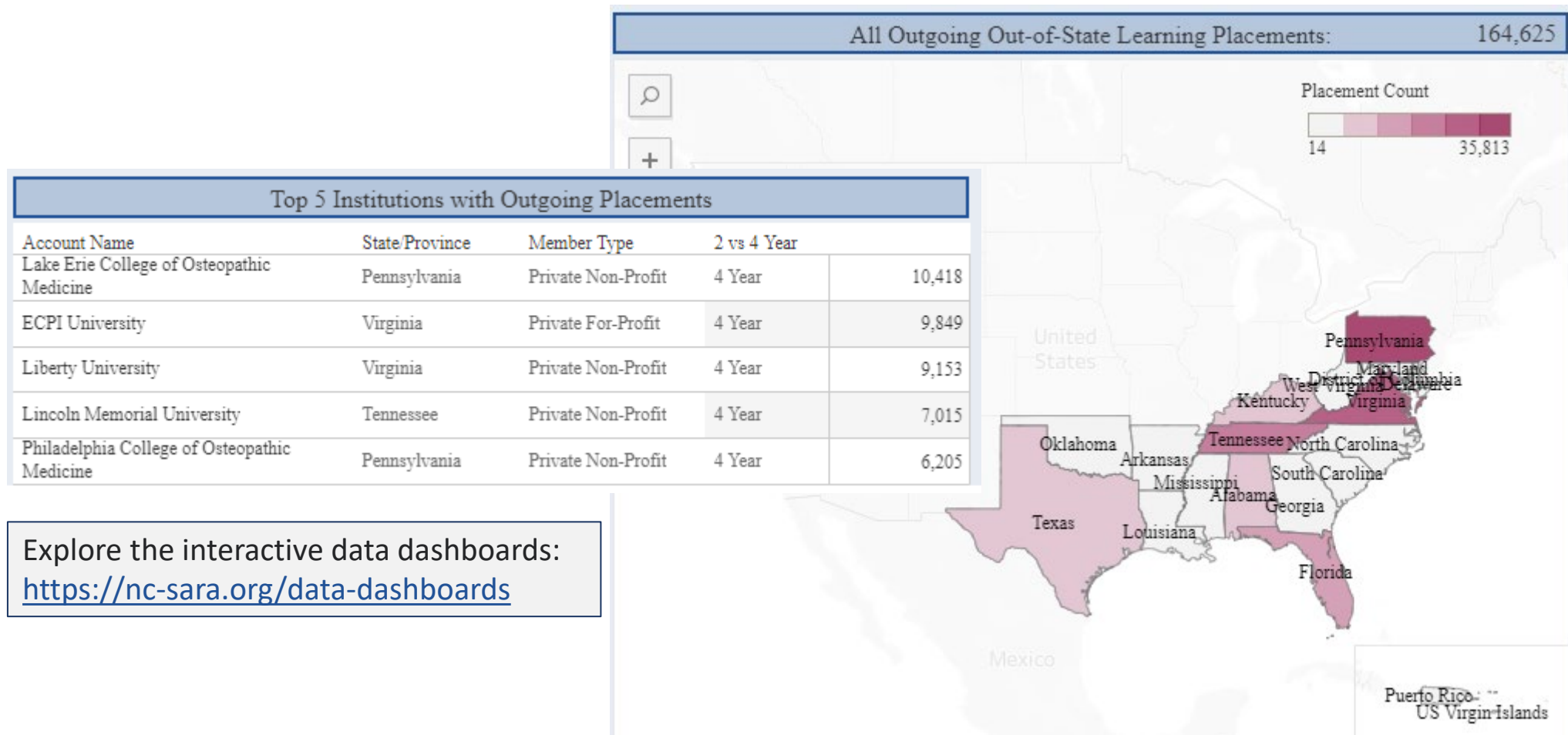
Total Incoming OOSLP



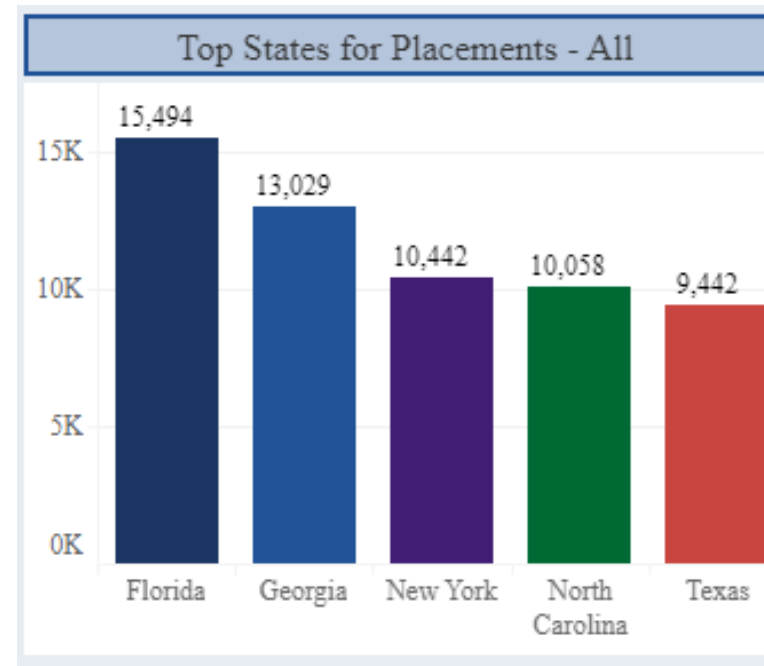
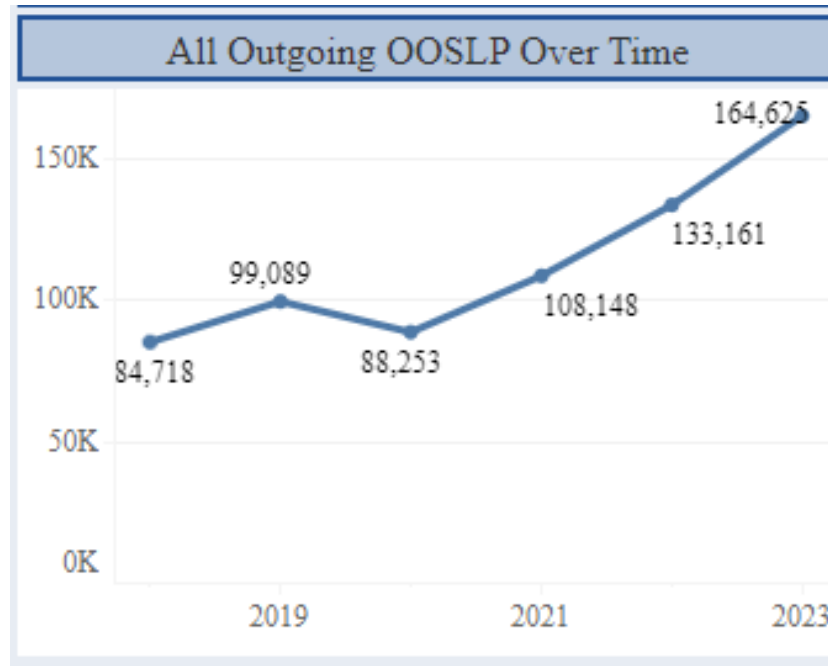
SREB Incoming OOSLP



SREB Outgoing Out-of-State Learning Placements Map



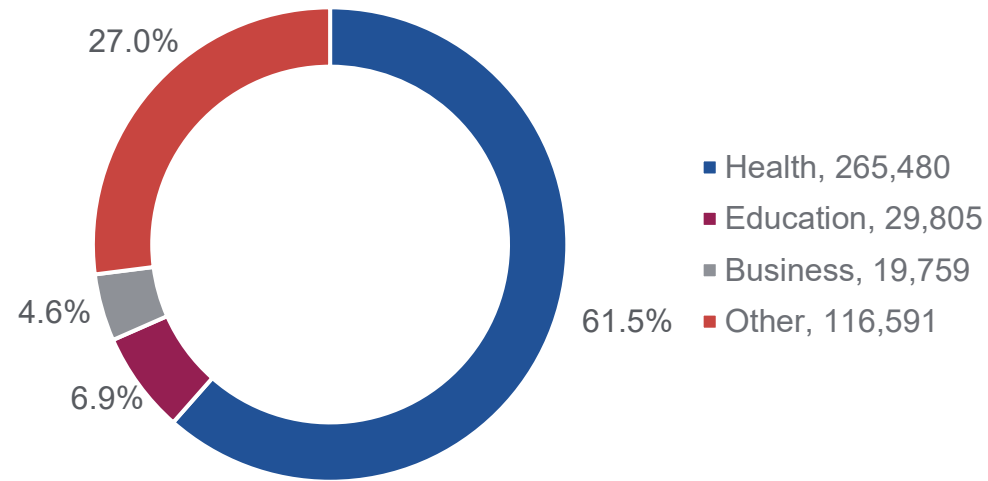
SREB Outgoing Out-of-State Learning Placements



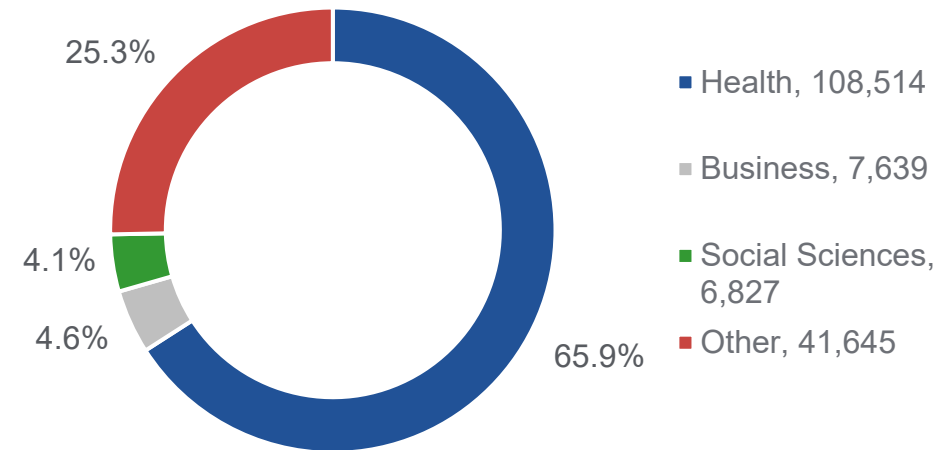
Explore the interactive data dashboards:
<https://nc-sara.org/data-dashboards>

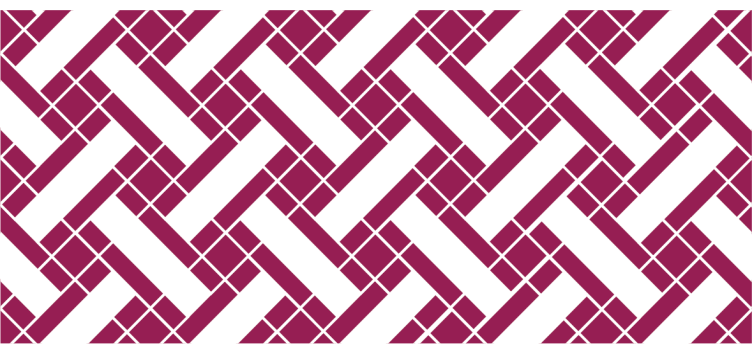
Out-of-State Outgoing Learning Placements Reported by CIP Code Program Areas for 2023

Total Outgoing OOSLP



SREB Outgoing OOSLP





Changes for 2025 Reporting

Huge Thanks to Our Pilot Institutions



Changes for 2025 Data Collection

Contact Verification

- Only users assigned as an institutional contact in Salesforce will be able to upload data.
- Users not in Salesforce will need to be verified by a current Salesforce contact for their institution (then entered by NC-SARA staff).
- Data reporting portal will be one public link, rather than individual institution links.
- Contacts for multiple institutions will be able to select the institution to submit for.



The screenshot shows a web form titled "Data Reporting Submission". At the top center is the NC-SARA logo, which consists of a stylized "NC" in blue and red squares followed by "SARA" in blue. Below the logo is the text "National Council for State Authorization Reciprocity Agreements". Underneath that is the heading "Data Reporting". A red asterisk followed by the text "* Please enter your email" is positioned above a text input field. The input field contains the placeholder text "you@example.com". At the bottom right of the form is a red button with the word "Next" in white. At the very bottom of the page, partially visible, is a line of text: "Required to report certain learning placements in every state, territory, and".

Changes for 2025 Data Collection

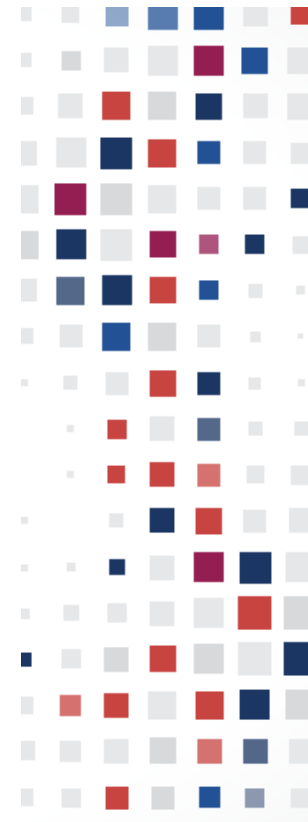
The screenshot shows a web interface titled "Data Reporting Submission". At the top center is the NC SARA logo, which consists of a stylized blue and red square icon followed by the text "NC SARA" and "National Council for State Authorization Reciprocity Agreements" below it. Under the logo, the heading "Data Reporting" is centered. Below this heading, there are two columns. The left column is titled "Exclusively Distance Education Enrollment (EDEE)" and shows the status "INCOMPLETE" in red text, followed by the message "You have 2 Institutions with incomplete EDEE data" and a red button labeled "Start EDEE". The right column is titled "Out-of-State Learning Placement (OOSLP)" and also shows the status "INCOMPLETE" in red text, followed by the message "You have 2 Institutions with incomplete OOSLP data" and a red button labeled "Start OOSLP". At the bottom right of the interface is a red button labeled "Exit".

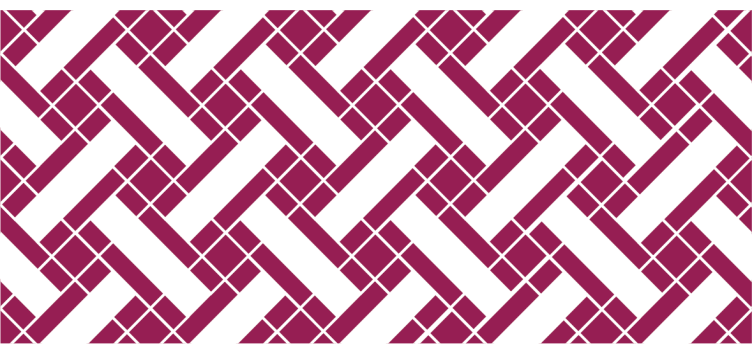
File Upload vs. Manual Entry

- Users will be provided with two templates to compile their EDEE and OOSLP data.
- Data will be upload in a .csv file, rather than manually entered in the web form.
- Institutions will be given the chance to confirm data and resubmit a file in case of errors.
- Confirmation emails will include counts and submitter name.
- Users will easily see when they have a submission outstanding.



Important Annual Data Reporting Dates

- **2024 Annual Data Handbook Available:** January 2025
 - **2024 Annual Data Collection Webinar:** March 2025
 - **2024 Annual Data Collection Window:** May 15 – June 15, 2025
- 



Other Data Reports of Interest

SARA Institution Cost Savings

2023 Estimated Renewal Savings by Region:

State	Number of SARA Member Institutions	Estimated Costs	State and NC SARA Costs	SARA Affiliation Fee	Estimated Savings
MHEC	644	\$39,197,355	\$2,912,100		\$36,285,255
NEBHE	344	\$35,764,100	\$2,683,563	\$100,000	\$32,980,538
SREB	1,067	\$73,354,450	\$5,408,000	\$160,000	\$67,786,450
WICHE	275	\$18,217,525	\$1,328,000		\$16,889,525
Grand Total	2,330	\$166,533,430	\$12,331,663	\$260,000	\$153,941,768

SARA Cost Savings Calculator

The SARA Cost Savings calculator may be used by colleges and universities offering interstate distance education to:

- Estimate the costs associated with state authorization, both for SARA and non-SARA participants.
- Project changes to costs based on the addition of new distance education programs or expansion of existing programs.
- Evaluate the cost savings and the return on investment of SARA participation.

<https://nc-sara.org/sara-cost-savings-calculator>





Other Available Data

- **Non-Renewal Dashboards in Salesforce**
 - Please check your expired institutions!
- **Potential SARA Participating Institutions**
 - Institutions who may be eligible for SARA participation with large numbers of out-of-state exclusively distance education enrollment
- **Institutions with Declining Enrollment**
 - What would be a percentage decline that would concern you?
- **SARA Source**
 - Coming in Feb. 2024 – will include all SARA-participating institutions
- **Complaints Reporting**
 - New policy to be implemented in 2026 - collecting student state and complaint type
 - 2025 Complaint Working Group

Questions and Discussion



Thank You!



For questions please email:
data@nc-sara.org

NC-SARA Website: www.nc-sara.org