

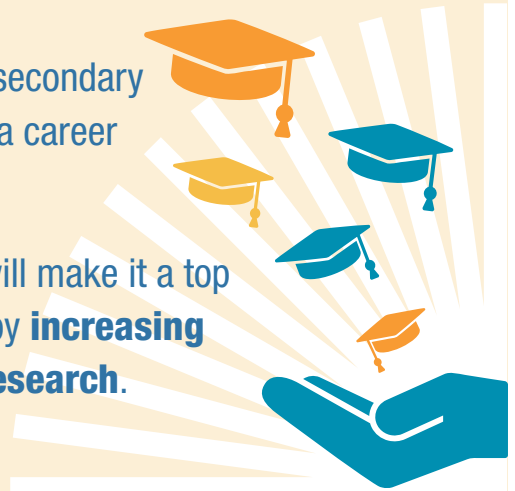
# SREB Goal for College Attainment

**60%** of working-age adults will have a postsecondary credential: an associate or bachelor's degree or a career certificate.



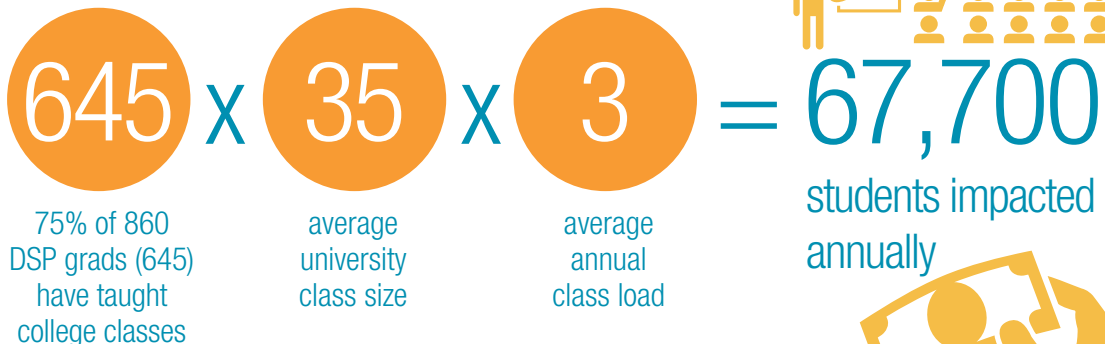
Public postsecondary institutions will make it a top priority to help states meet needs by **increasing graduates, public service and research.**

- SREB Challenge to Lead 2020



## How does the SREB Doctoral Scholars Program help states meet this goal?

### Increasing Graduates



### Public Service

**88%** of DSP graduates have participated in service on or off campus.

- Survey of DSP grads



### Research

85 DSP graduates generated more than **\$21 million** in research grants from:

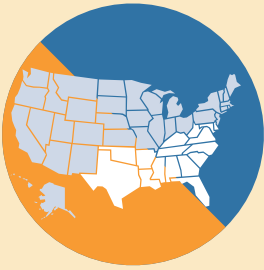
National Science Foundation  
American Sociological Association  
National Aeronautics Space Administration  
National Institutes of Health

- Survey: 10% of grads

# What is the SREB Doctoral Scholars Program goal?

To increase faculty diversity by helping more Ph.D. students complete degrees and start faculty careers.

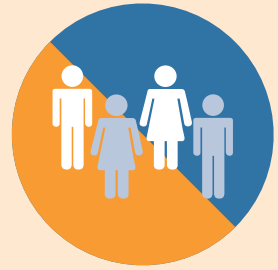
## How?



Through SREB, states come together to leverage resources to support Ph.D. students more affordably and effectively.



Along with financial support, scholars find mentors, learn the ways of academia, and connect with campuses and labs that want to hire them.



Colleges and universities gain a pool of well-qualified Ph.D.s. to help make their hiring practices more inclusive and their faculties more diverse.

## Results

**89%**



of DSP students have graduated or are currently enrolled

**75%**



of DSP graduates have been employed in higher education

**36%**



of DSP graduates have majored in STEM fields