

## Demographics



**687,000**

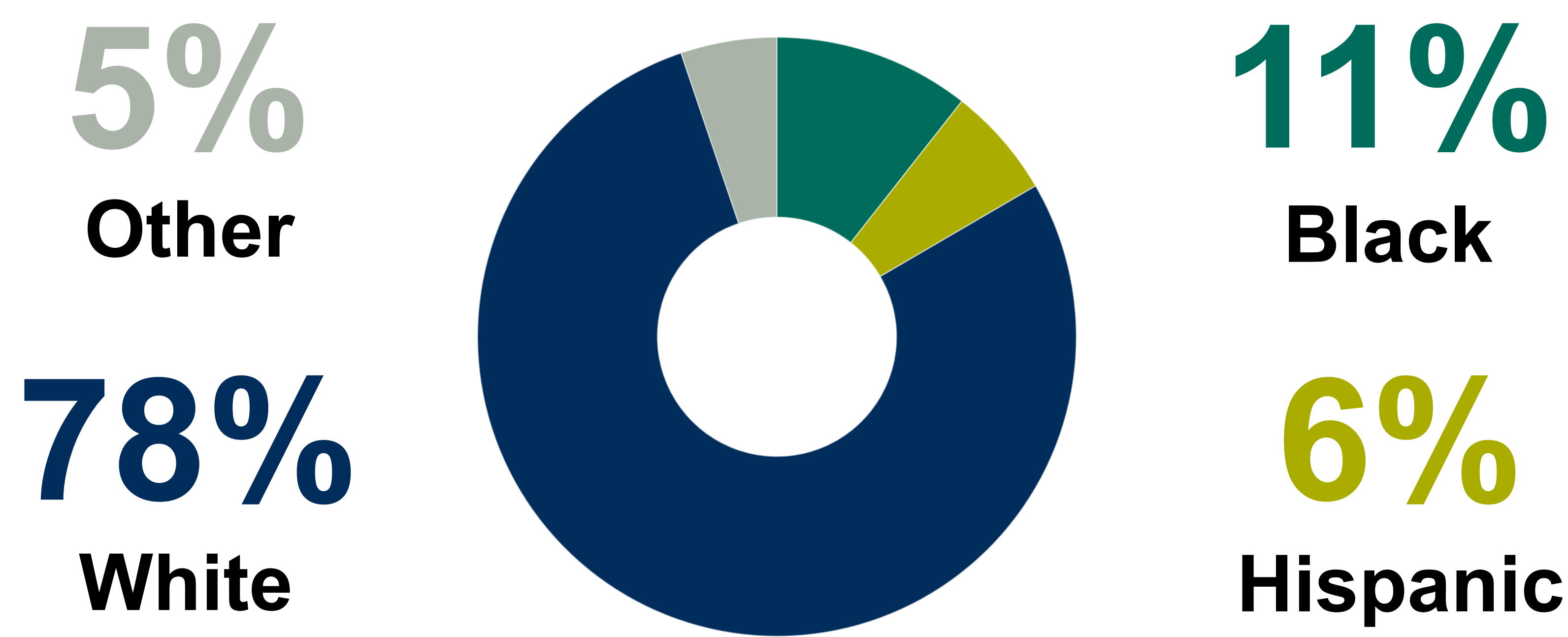
PK - 12th grade students



**2.0%**

enrollment growth 2010 to 2015

### PK - 12 Enrollment



**36.4%**

of 4-year olds enrolled in publicly funded pre-K programs, including:

**10.6%**

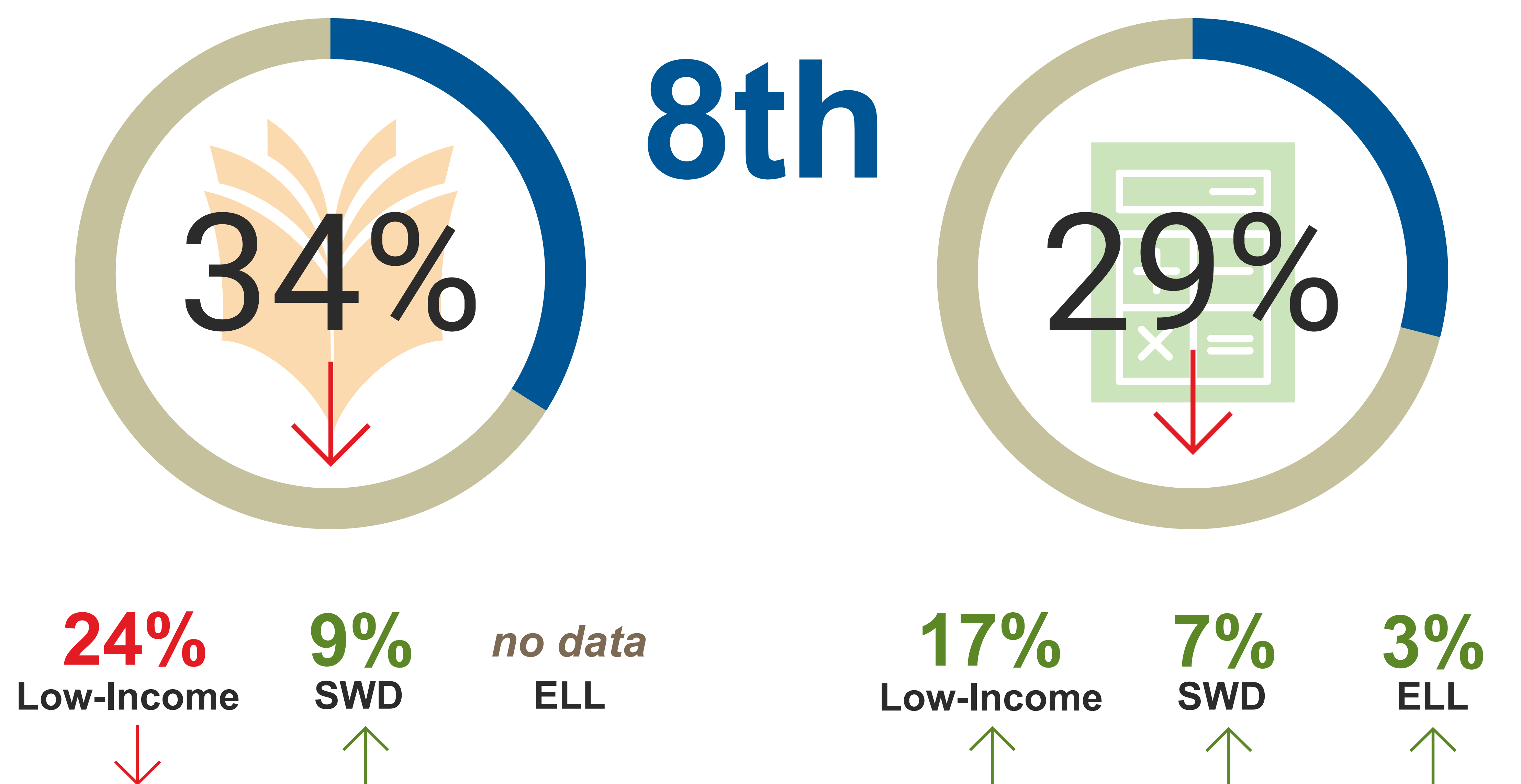
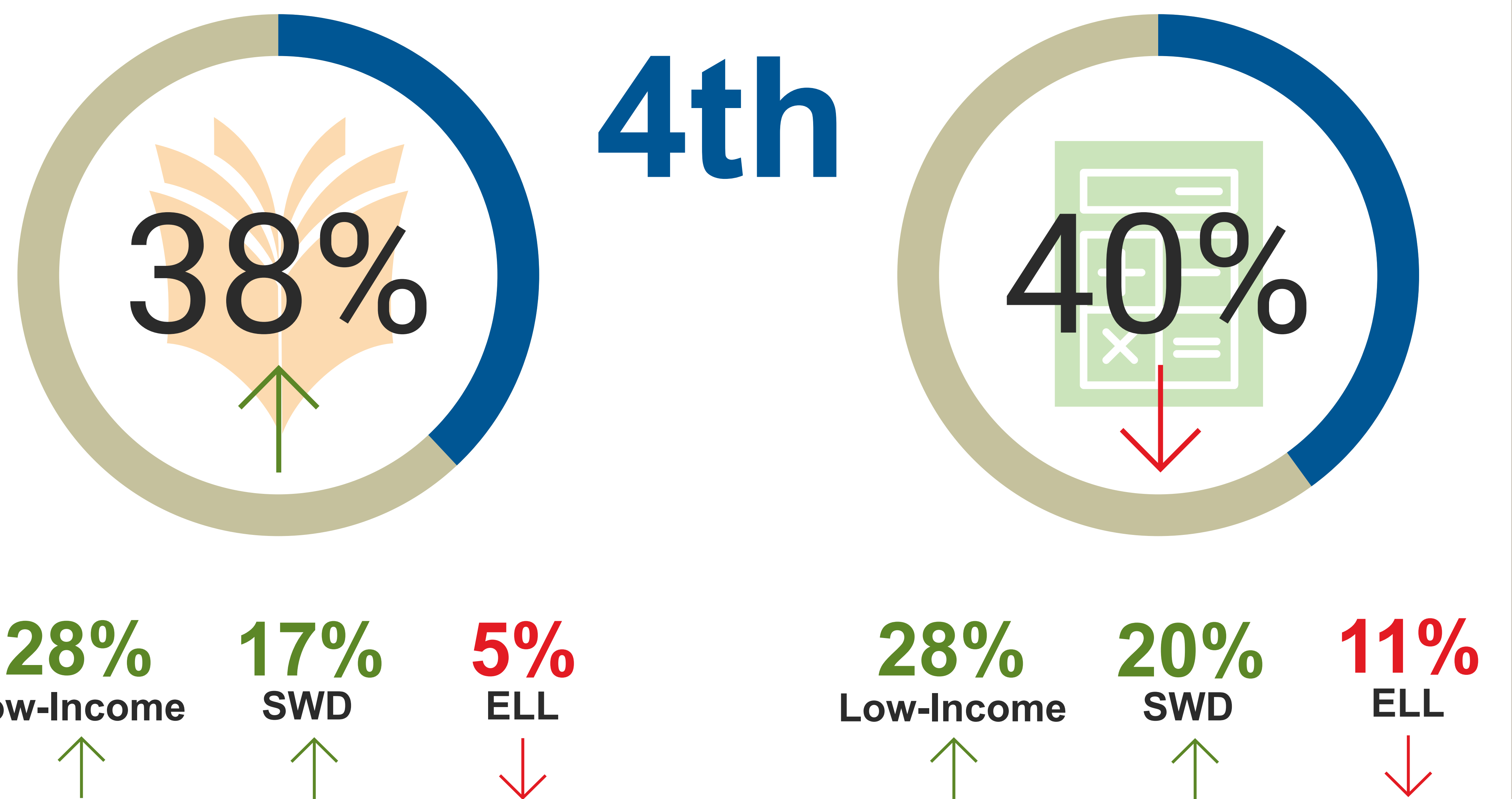
in Head Start

**25.8%**

in state pre-K

## NAEP Reading & Math

Percentage of students scoring at or above Proficient



Arrows indicate direction of change of 0.1 or more in the percentages from 2013 to 2017. SWD = Students With Disabilities; ELL = English Language Learners

## High School

high school graduation rate:

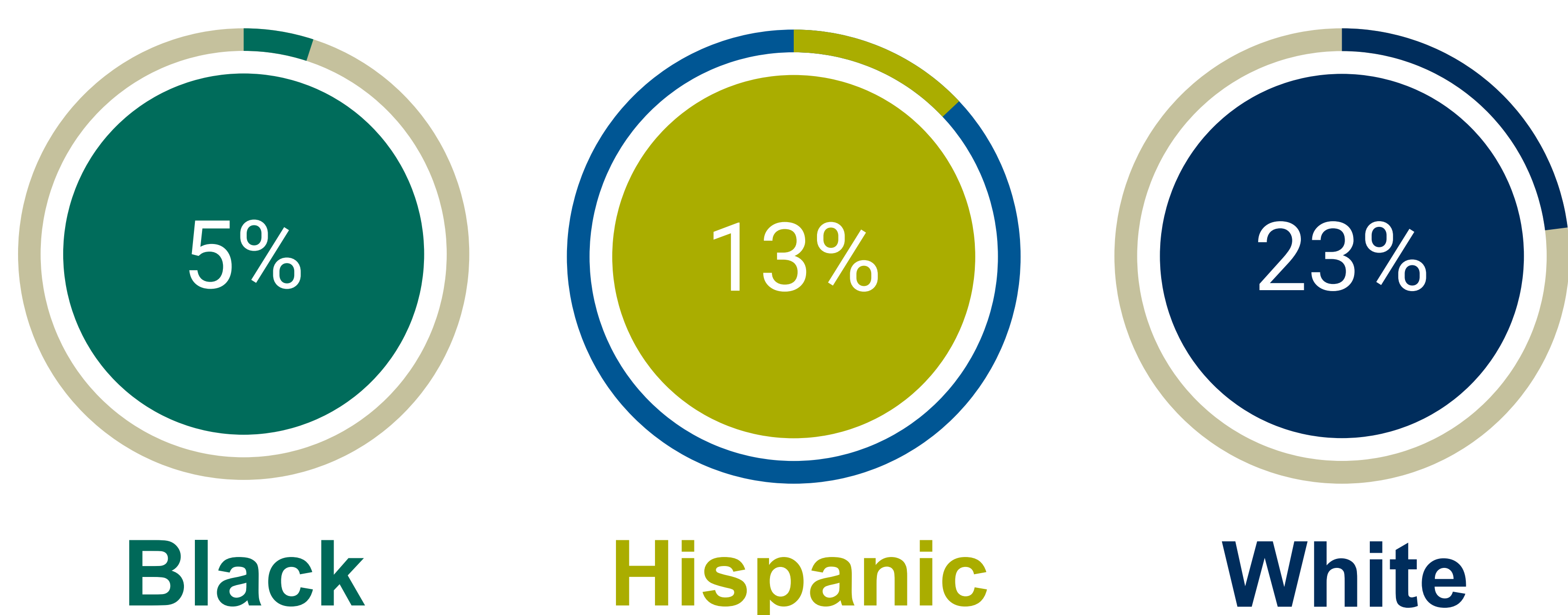


**20%**

of students who took the ACT met **all 4**

**college-readiness benchmarks**

including



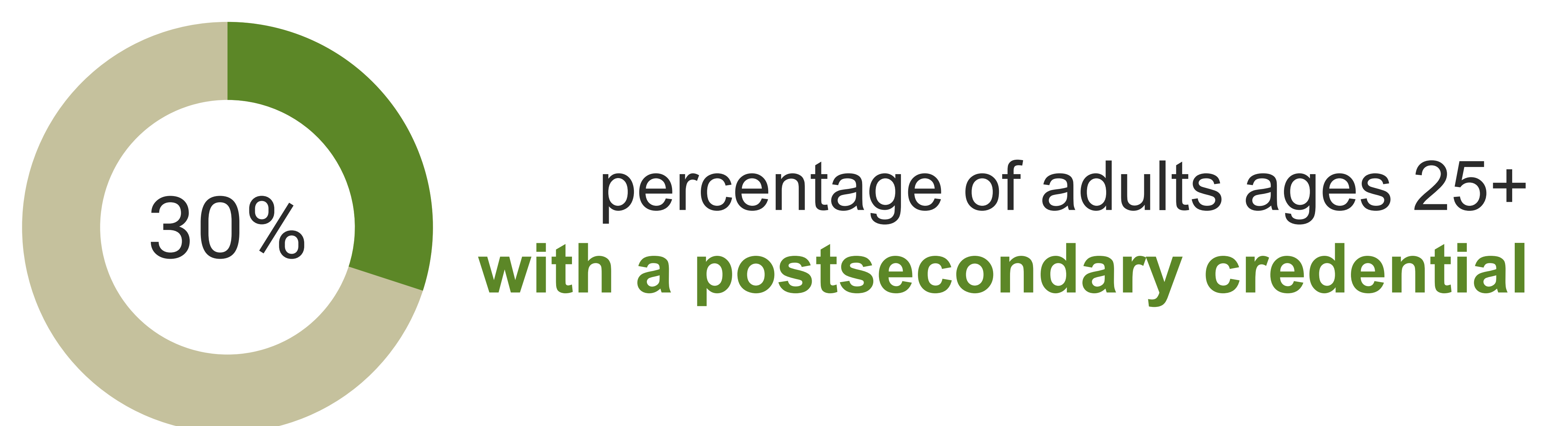
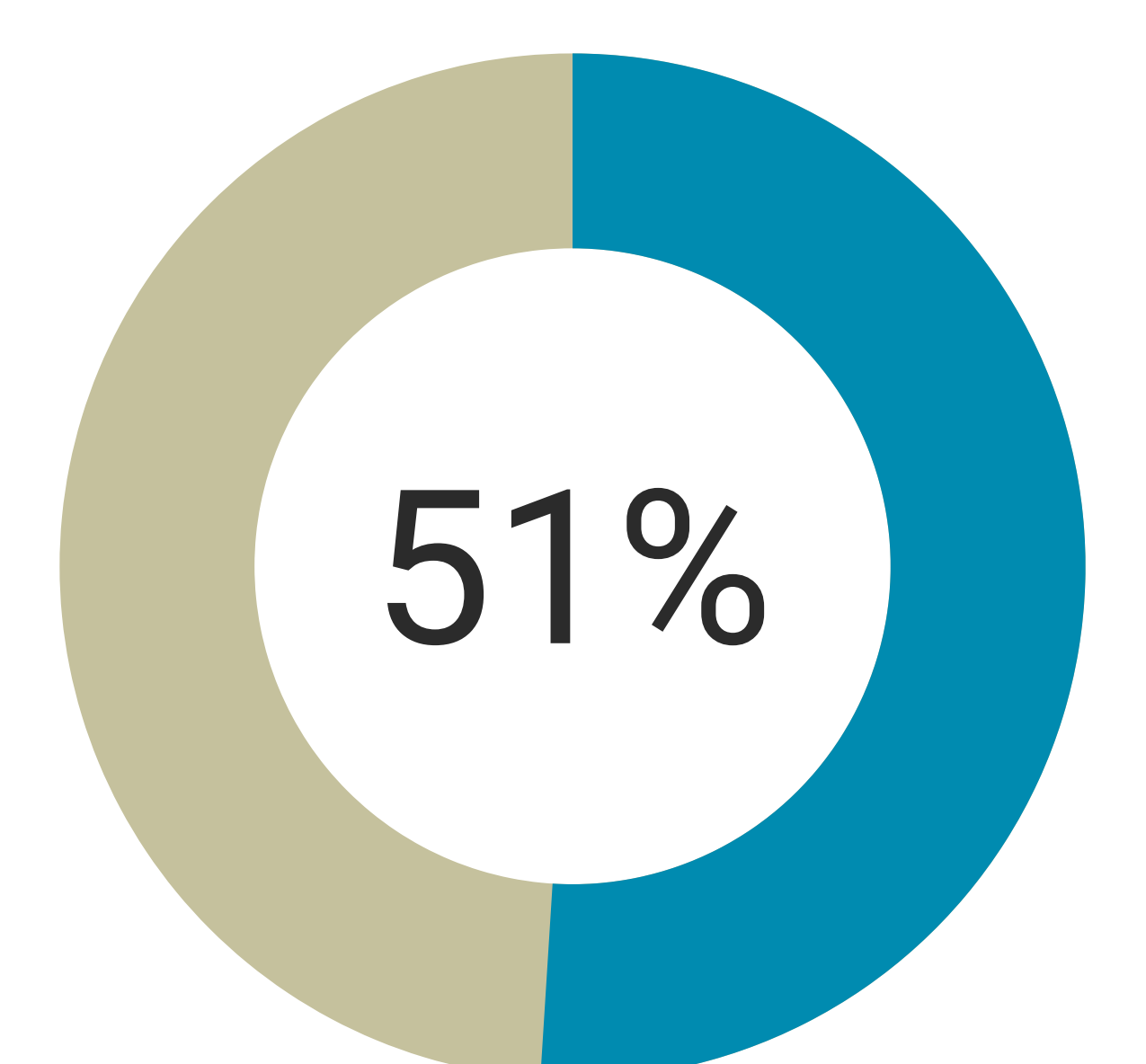
Percentage of students meeting **ACT STEM benchmark**

**13%**

## Beyond Secondary



portion of 4-year college students who graduated in 6 years or less



percentage of adults ages 25+ without a high school diploma

