

# About Maryland's Commission on Innovation and Excellence in Education

*Preliminary Report, January 2018*

*William E. Kirwan, Chair*

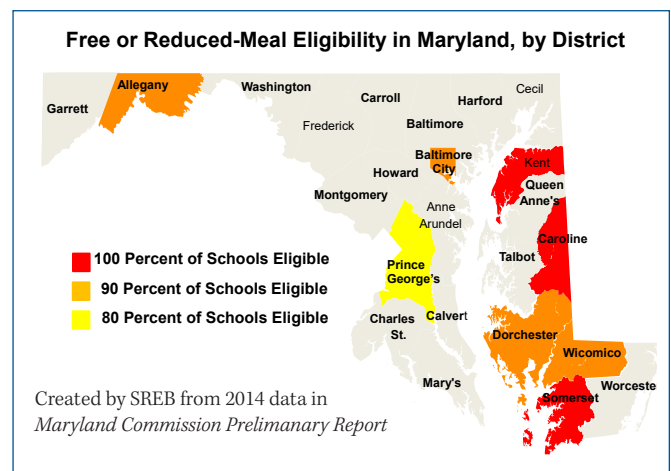
## Commission Vision for Maryland

The report lays out a vision of all students in Maryland on the path to college- and career-readiness standards by 10th grade, having mastered a curriculum benchmarked against international standards. To achieve such a vision, the Commission concludes that Maryland “must:

- provide a system of early childhood education that enables all students to enter kindergarten ready to learn;
- ensure highly qualified and diverse teachers and leaders;
- **provide the kind of support that children growing up in areas of concentrated poverty need to succeed in school and in life;**
- give struggling learners and students with disabilities the kind of support that will enable them to succeed;
- significantly reduce achievement gaps based on income and race; and
- be held accountable for ensuring the success of all students.” (page 8)

## Commission Perspective on Poverty

“Following a period of decline after 2003, the number of children living in poverty has grown substantially in Maryland since the Great Recession of 2007-08. In 2015, 14 percent of Maryland children under age 18 were living in poverty; that figure was 34 percent in Baltimore City. The overwhelming majority of these children attend our public schools. More than half of public schools (almost 60 percent) across the State now have 40 percent or more of their students eligible for a free or reduced-price meal, which is based on 185 percent of the federal poverty level. These schools exist in every county.” (page 6)



The Kirwan Commission report is available at:

<https://msa.maryland.gov/megafile/msa/speccol/sc5300/sc5339/000113/022600/022621/20180174e.pdf>

Prepared by SREB staff for discussion at the 2018 SREB Annual Meeting.