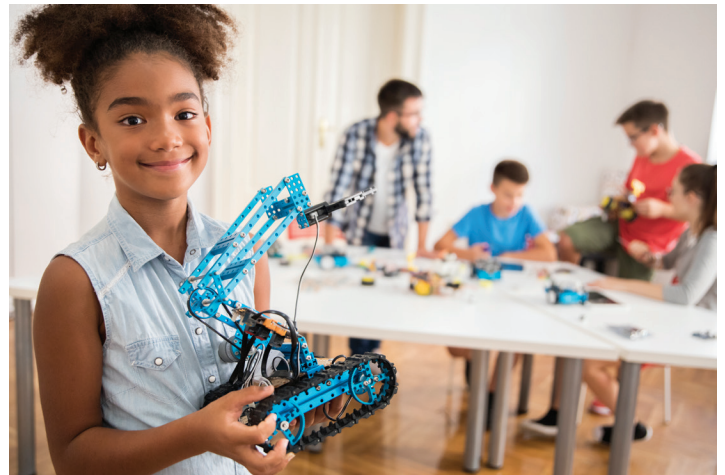


## SREB's 2022 Making Middle Grades Work Surveys

SREB's surveys provide an opportunity to collect authentic and anonymous student and teacher feedback. While schools have a variety of data sources available to them, SREB's surveys provide a deep-dive look into school and classroom practices by delivering descriptive data that show where schools are in their improvement process. The student survey asks about students' classroom experiences, social and emotional support, and expectations of their learning environment. The teacher survey explores support from school leaders and teachers' views on improving student achievement and setting high expectations for their students. **Surveys now include questions related to the impacts of COVID-19 and virtual, blended or hybrid instruction on students and teachers.**



### General Information

Surveys cost \$500 per school\* and are administered:

- ✓ Online to all or a random sample of 60 eighth-grade students at middle grades schools
- ✓ To all full- and part-time teachers
- ✓ At any time within the administration window



### What is the value of the SREB surveys?

All schools will receive user-friendly, actionable feedback reports. These reports allow schools to:

- ✓ Establish baseline data and track progress over time
- ✓ Identify areas of strength and areas needing improvement for school improvement plans
- ✓ Compare their current standings with all schools and similar schools
- ✓ Assess the impact of COVID-19 disruptions on students and faculty
- ✓ Identify barriers to opportunities for student and families
- ✓ Cross-compare student and teacher responses to similar topics
- ✓ Examine focus area and key practice indices that are proven predictors of student performance, including:
  - **Integrated curricula and assignments** that utilize real-world problems and projects
  - **Challenging and engaging instructional strategies** in all classrooms
  - **A seamless transition** from the middle grades to high school
  - Early opportunities for **career exploration**
  - A system of **extra help, enrichment and interventions** based on student needs
  - Leadership's emphasis on high expectations and **continuous school improvement**

| ACTIVITY                       | DATES                                 |
|--------------------------------|---------------------------------------|
| Survey Order Window            | September 20, 2021 - January 31, 2022 |
| Survey Administration Window   | February 1, 2022 - March 11, 2022     |
| Reports Distributed to Schools | May 31, 2022                          |

[Register Today!](#)

**Questions? Contact us at: [surveys@sreb.org](mailto:surveys@sreb.org)**

\* Survey costs will increase to \$600 per school for the Spring 2024 assessment.